

This map was prepared for assessment purposes

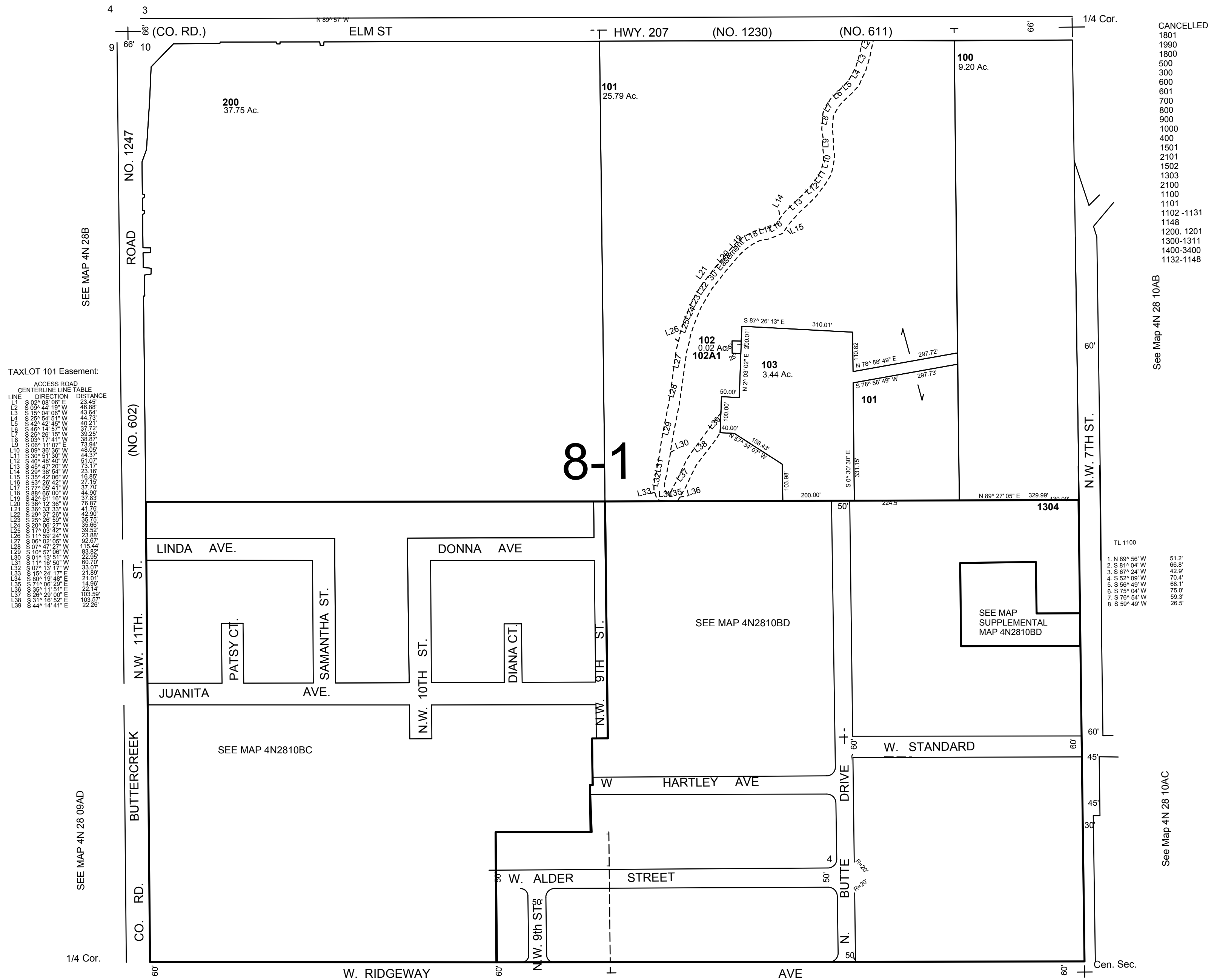
# NW 1/4 SEC 10 T4N R28E WM UMATILLA COUNTY

1"=200'

## 4N 28 10B

AERIAL PHOTO NO. NZ-1P 121

See Map 4N 28 03C



CANCELLED  
1801  
1800  
1800  
500  
300  
600  
601  
700  
800  
900  
1000  
400  
1501  
2101  
1502  
1303  
2100  
1100  
1101  
1102 -1131  
1148  
1200, 1201  
1300-1311  
1400-3400  
1132-1148

See Map 4N 28 10AB

TL 1100  
1. N 89° 56' W 51.2'  
2. S 81° 04' W 66.5'  
3. S 87° 24' W 42.0'  
4. S 52° 09' W 70.4'  
5. S 54° 45' W 68.1'  
6. S 75° 04' W 75.0'  
7. S 76° 04' W 59.3'  
8. S 59° 49' W 28.5'

See Map 4N 28 10AC

See Map 4N 28 10 CB

See Map 4N 28 10CA

REVISED: 04-04-17

## 4N 28 10B