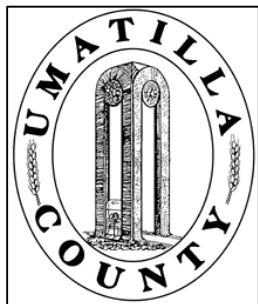


This map was prepared for Assessment & Taxation purposes only and was NOT prepared nor is it suitable for legal, engineering or surveying purposes.



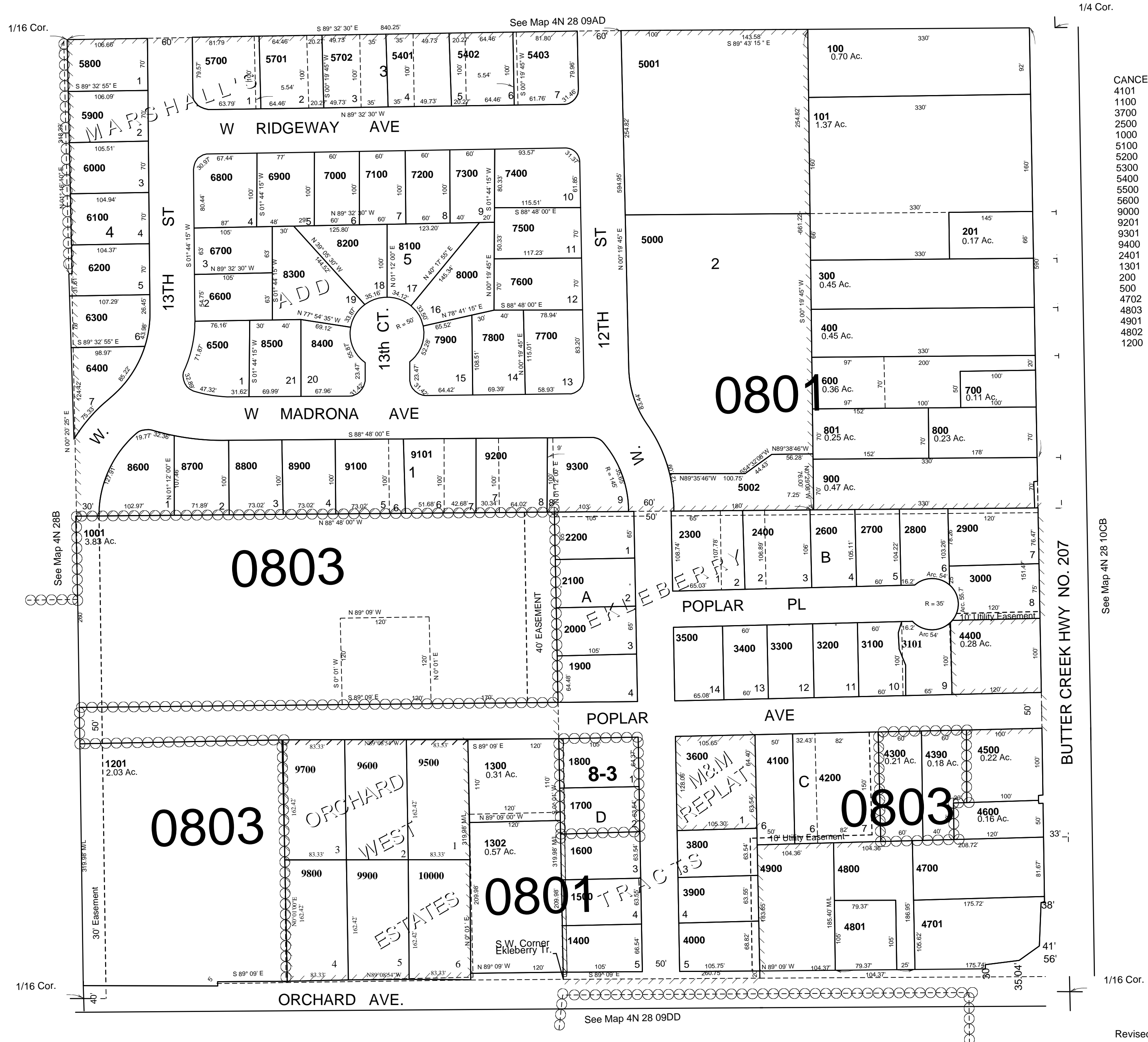
NE1/4 SE1/4 SEC 9 T 4N R 28E WM

UMATILLA COUNTY

SCALE: 1" = 100'

4N2809DA

Ekleberry Tracts  
Marshall's Add  
Aerial Photo No. 1P-121



- CANCELLED
- 4101
  - 1100
  - 3700
  - 2500
  - 1000
  - 5100
  - 5200
  - 5300
  - 5400
  - 5500
  - 5600
  - 9000
  - 9201
  - 9301
  - 9400
  - 2401
  - 1301
  - 200
  - 500
  - 4702
  - 4803
  - 4901
  - 4802
  - 1200

See Map 4N 28 10CB

Revised: 06-07-17

4N2809DA