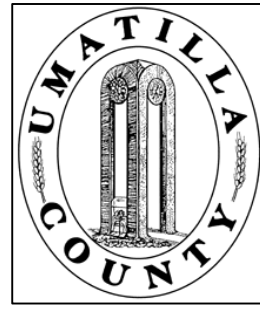


This map was prepared for Assessment & Taxation purposes only and was NOT prepared nor is it suitable for legal, engineering or surveying purposes.

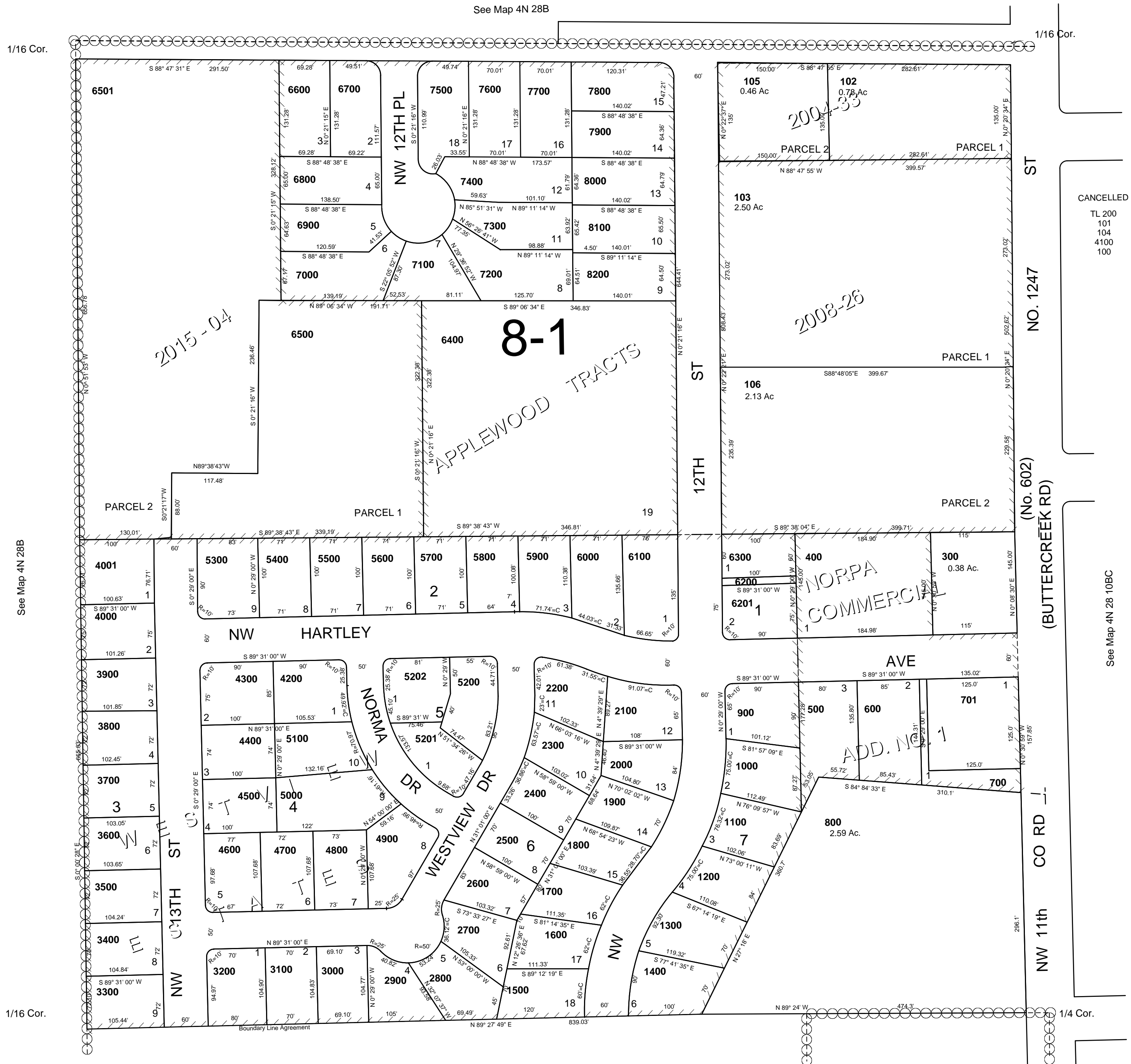


SE 1/4 NE 1/4 SEC 9 T4N R28E WM UMATILLA COUNTY

4N 28 09AD

AERIAL PHOTO NO. NZ-1P-120

SCALE: 1" = 100



See Map 4N 28B

1/16 Cor.

See Map 4N 28 09DA

REVISED: 3/10/15

4N 28 09AD