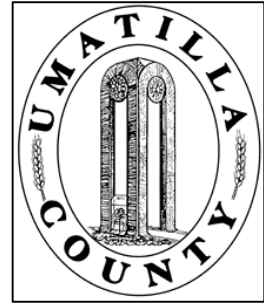


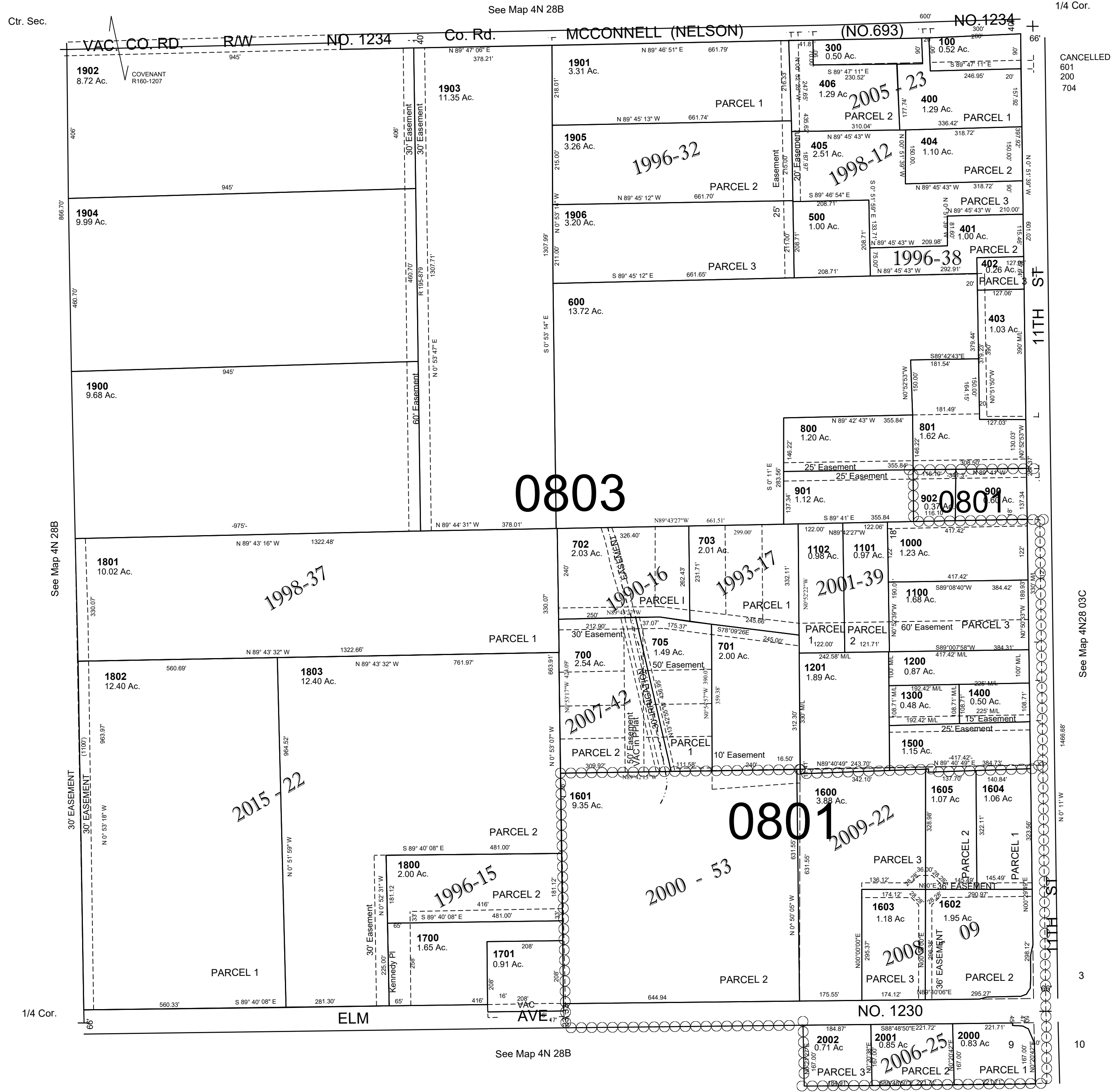
This map was prepared for Assessment & Taxation purposes only and was NOT prepared for, nor is it suitable for legal, engineering or surveying purposes.



SE1/4 SEC 4 T4N R28E WM UMATILLA COUNTY

SCALE: 1" = 200'

4N 28 04D
Aerial Photo NZ-1P-120



1/4 Cor.
CANCELLED
601
200
704

See Map 4N28 03C

1466.68'

N 0° 11' W

11TH ST

3

10

Revised: 08-13-2021
4N 28 04D