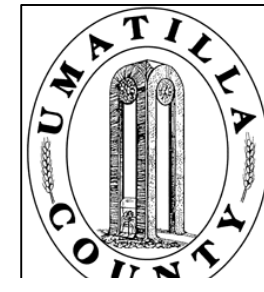


This map was prepared for Assessment & Taxation purposes only and has not been prepared or is suitable for legal, engineering or surveying purposes.



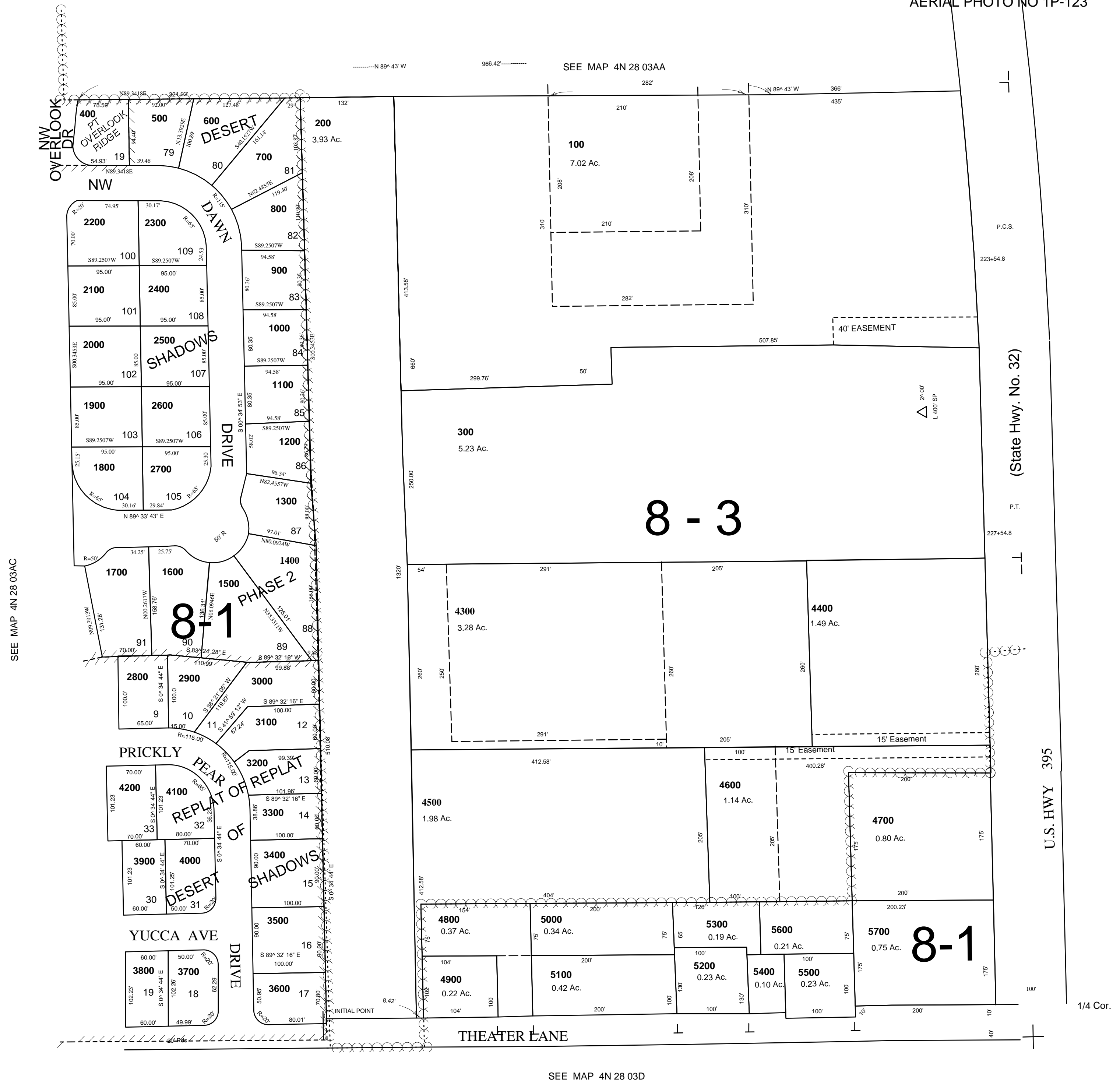
SE1/4 NE1/4 SEC 3 T 4N R28E WM UMATILLA COUNTY, OR

SCALE: 1" = 100'

4N2803AD

Replat of Replat of Desert Shadows
Desert Shadows Phase 2

AERIAL PHOTO NO 1P-123



SEE MAP 4N 28 02B

4N2803AD