

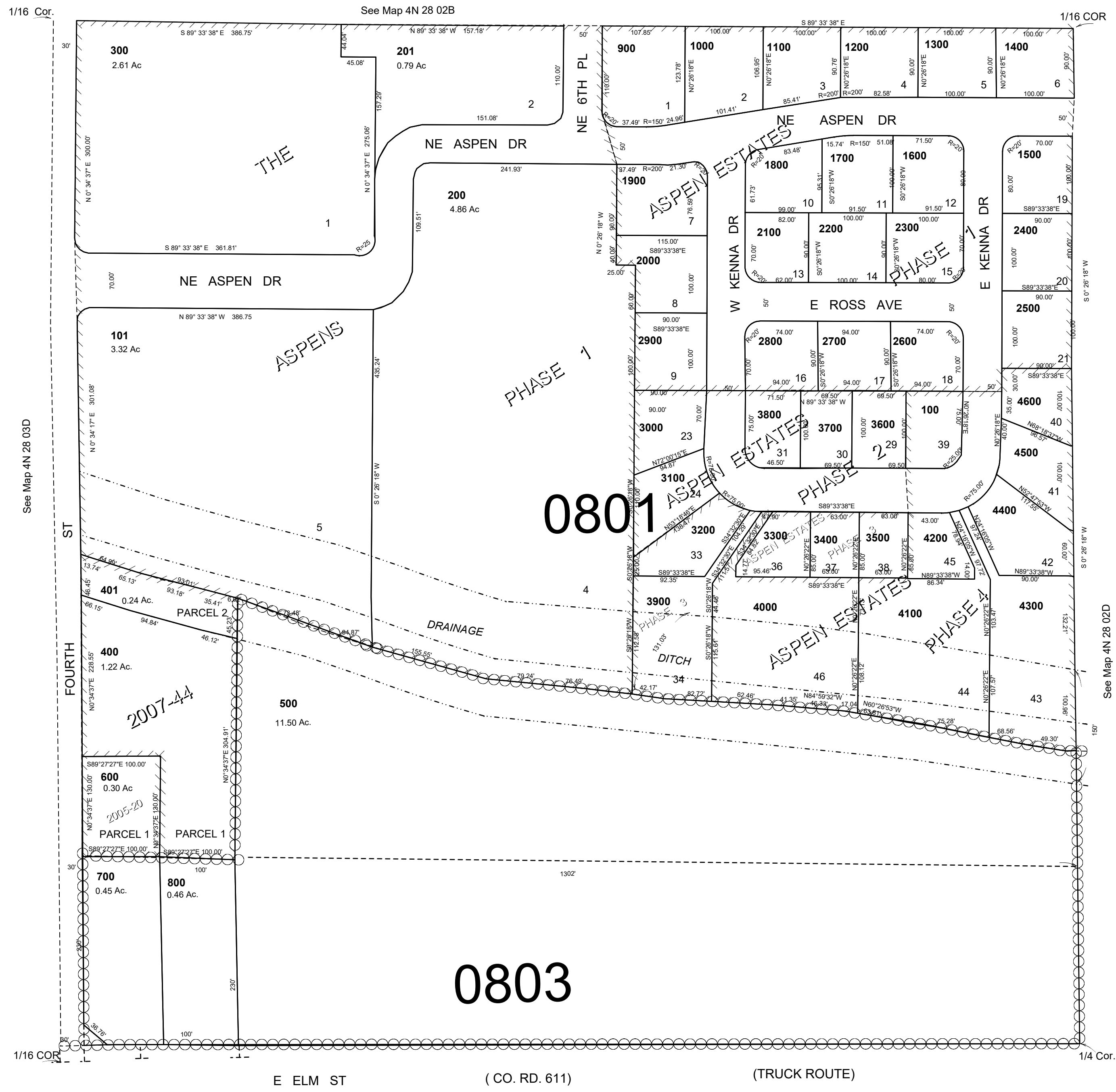
This map was prepared for Assessment & Taxation purposes only and was NOT prepared nor is it suitable for legal, engineering or surveying purposes.

# SE1/4 SW1/4 SEC 2 T4N R28E WM UMATILLA COUNTY

## 4N 28 02CD

AERIAL PHOTO NO. NZ 1P-122

SCALE 1"=100'



Revised: 01-09-20

## 4N 28 02CD