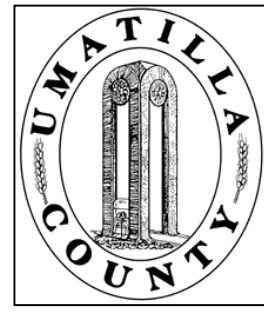


This map was prepared for Assessment & Taxation purposes only and was NOT prepared nor is it suitable for legal, engineering or surveying purposes.



NW1/4 SW1/4 SEC 2 T4N R28E WM UMATILLA COUNTY

SCALE: 1" = 100'

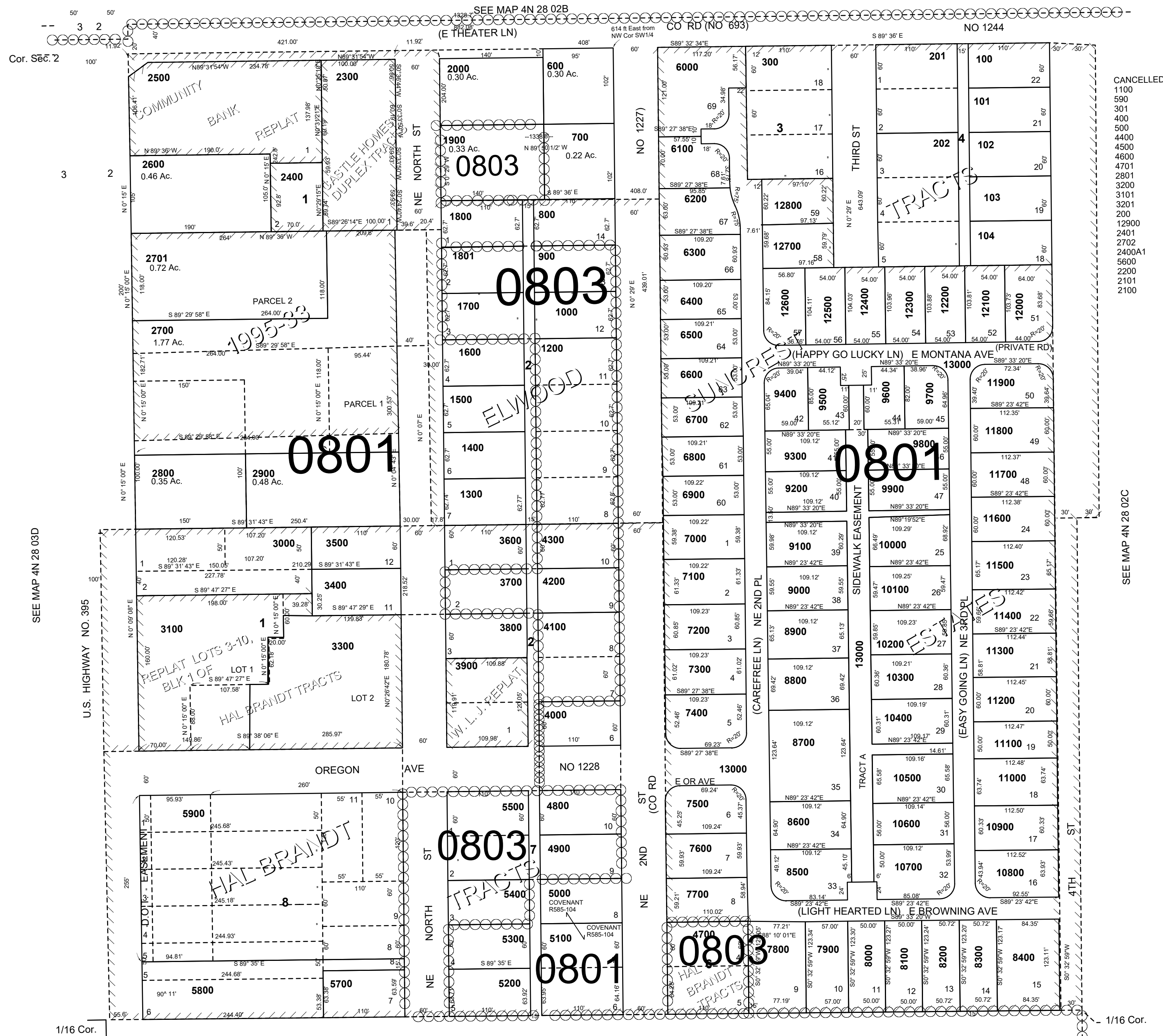
4N2802CB

ELWOOD TRACTS
HAL BRANDT TRACTS
Aerial Photo No NZ-1P-122

REPLAT OF BLK 3, LTS 1-15 &
BLK 4, LTS 6-17 OF ELWOOD TRACTS
ALL OF BLK 3, BLK4, BLK5 & BLK6,
LTS 1-3 & 6-10 OF HAL BRANDT TRACTS

REPLAT OF LTS 3-10, BLK 1
OF HAL BRANDT TRACTS

SUNCREST ESTATES



CANCELLED
1100
590
301
400
500
4400
4500
4600
4701
2801
3200
3101
3201
200
12900
2401
2702
2400A1
5600
2200
2101
2100

SEE MAP 4N 28 02C

SEE MAP 4N 28 03D

SEE MAP 4N 28 02C

REVISED: 03-18-19

4N2802CB