

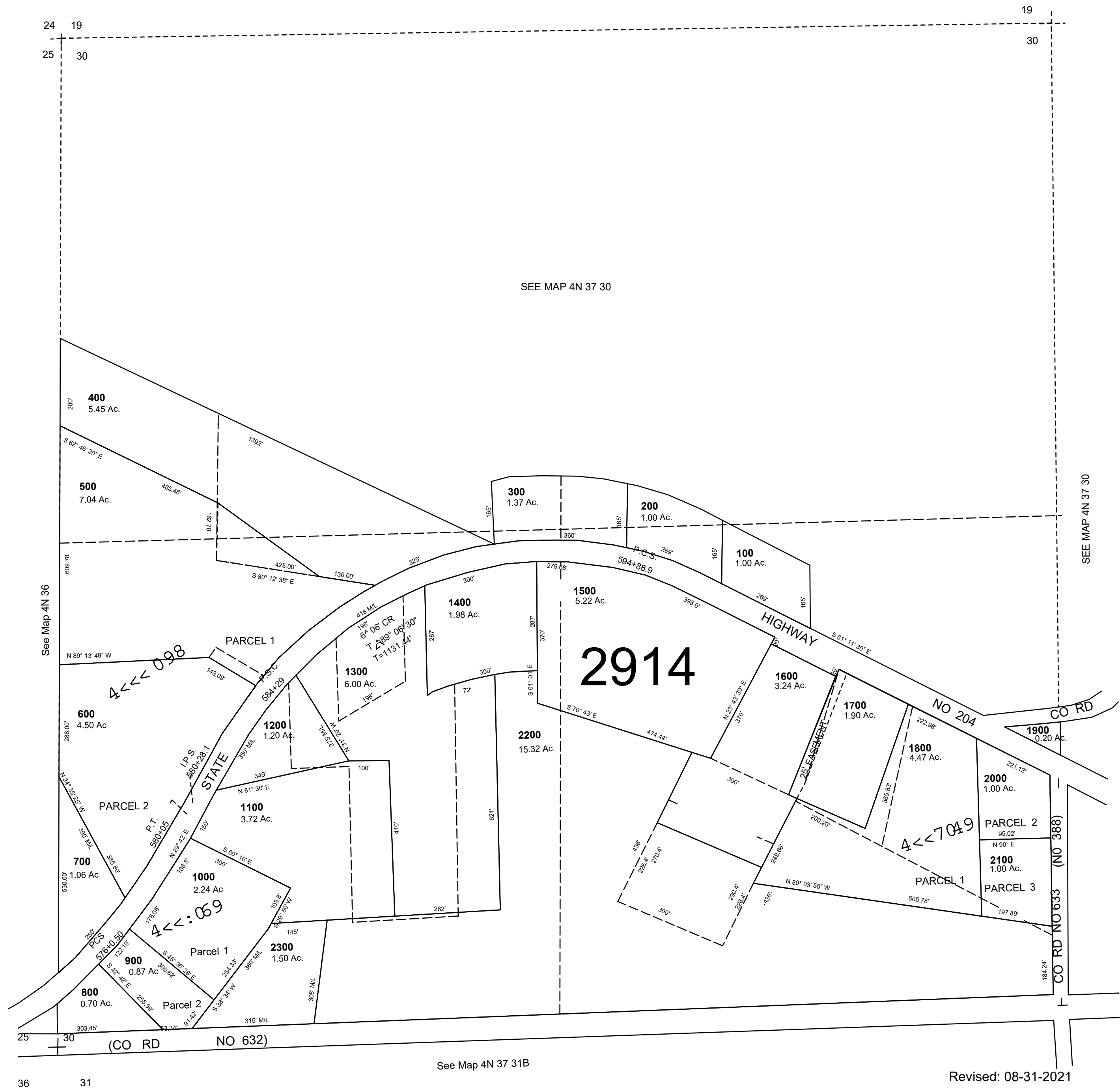
This map was prepared for Assessment & Taxation purposes only and was NOT prepared nor is it suitable for legal, engineering or surveying purposes.

# SW 1/4 SEC 30 T4N R37E WM UMATILLA COUNTY

1"=200'

## 4N 37 30C

AERIAL PHOTO NO. 9P-39



Revised: 08-31-2021

## 4N 37 30C