

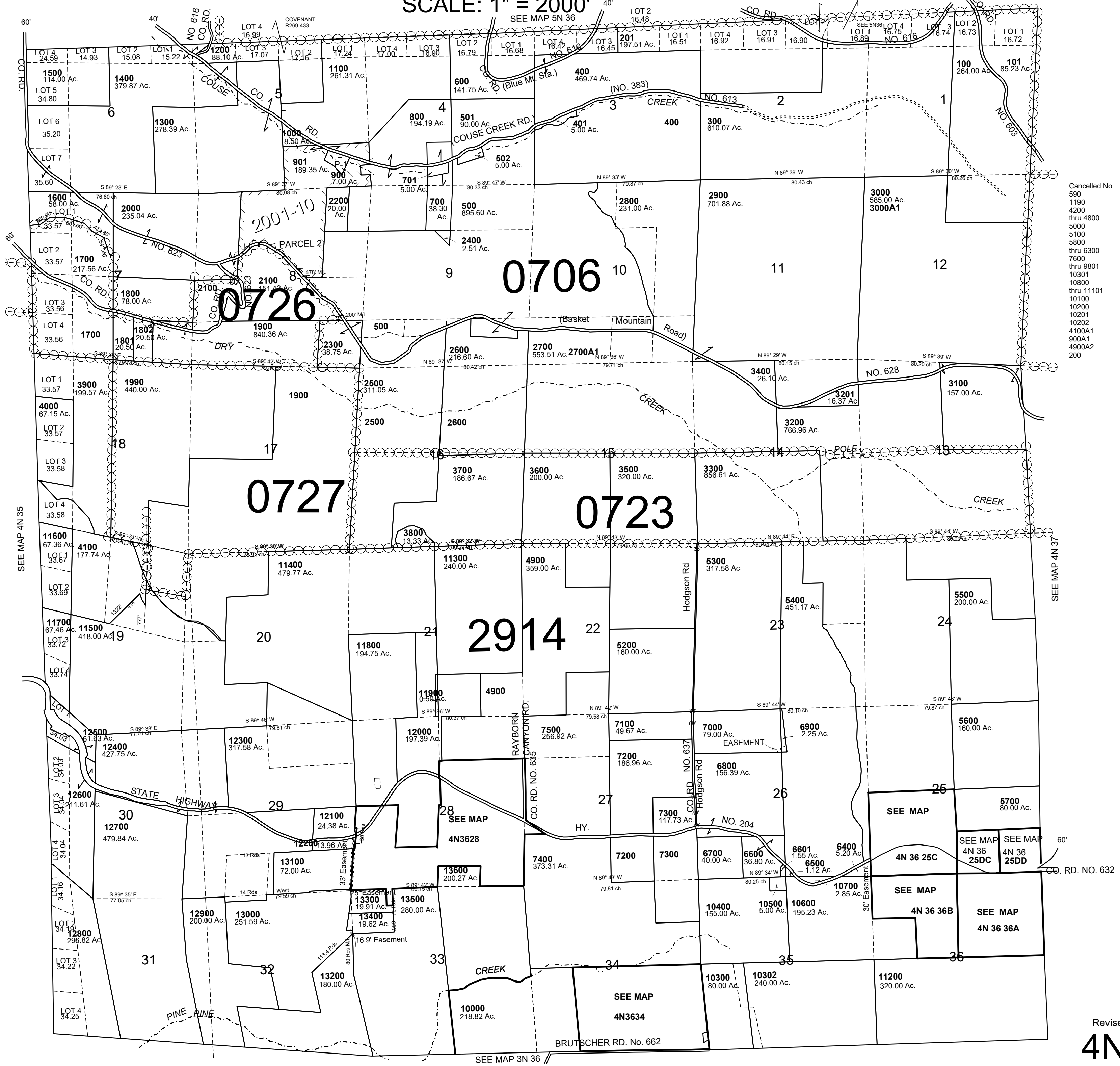
This map was prepared for Assessment & Taxation purposes only and was NOT prepared nor is it suitable for legal, engineering or surveying purposes.

# T4N R36E WM UMATILLA COUNTY

## 4N 36

AERIAL PHOTO NO. 5P 68-70 & 90-94

SCALE: 1" = 2000'



- Cancelled No
- 590
  - 1190
  - 4200
  - thru 4800
  - 5000
  - 5100
  - 5800
  - thru 6300
  - 7600
  - thru 9801
  - 10301
  - 10800
  - thru 11101
  - 10100
  - 10200
  - 10201
  - 10202
  - 4100A1
  - 900A1
  - 4900A2
  - 200

Revised: 03-29-2021  
**4N 36**