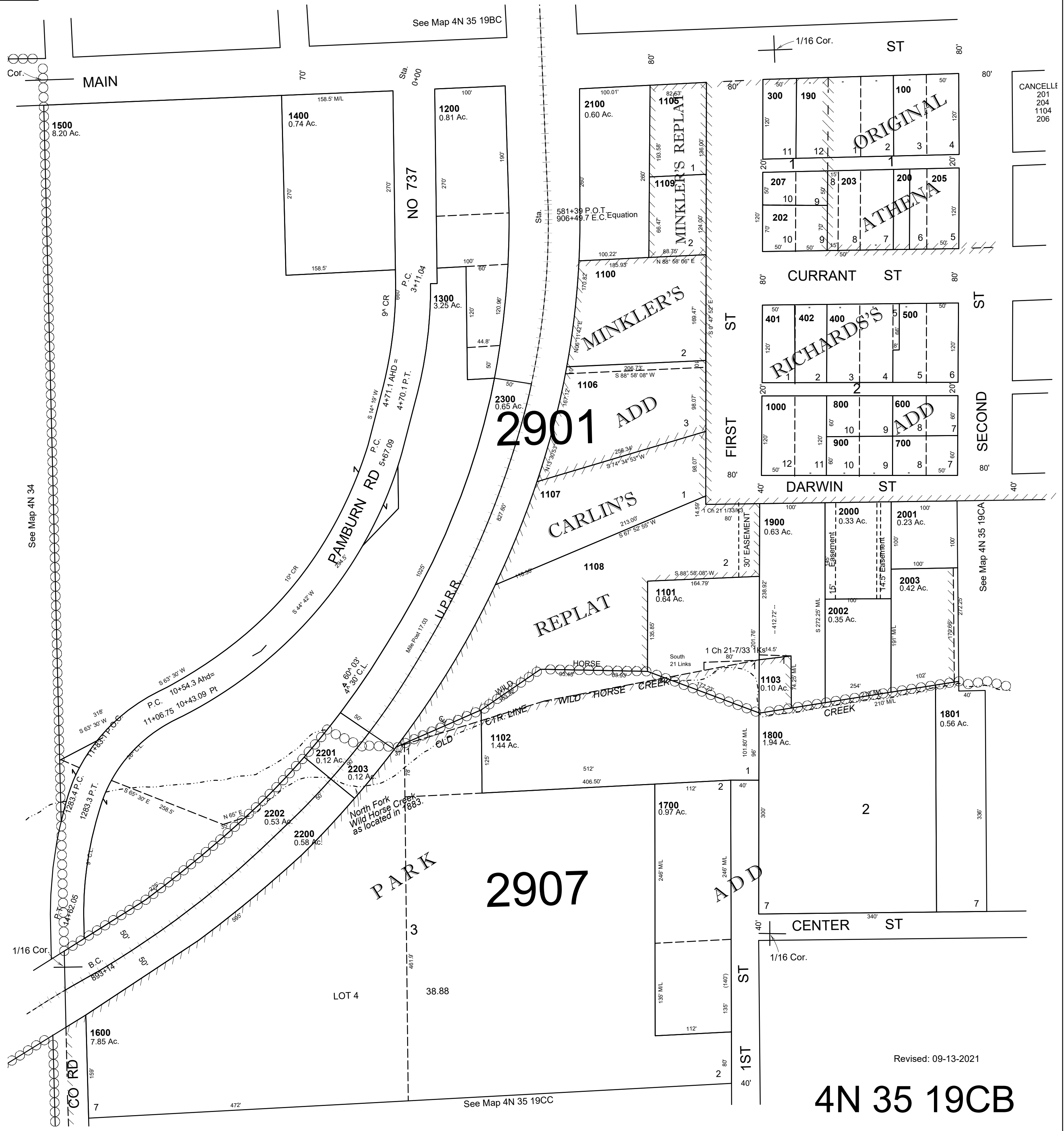


This map was prepared for Assessment & Taxation purposes only and was NOT prepared nor is it suitable for legal, engineering or surveying purposes.

SW1/4 SW1/4 SEC 19 T4N R35E WM UMATILLA COUNTY

4N 35 19CB AERIAL PHOTO NO. 5P-100

1"=100'



Revised: 09-13-2021

4N 35 19CB