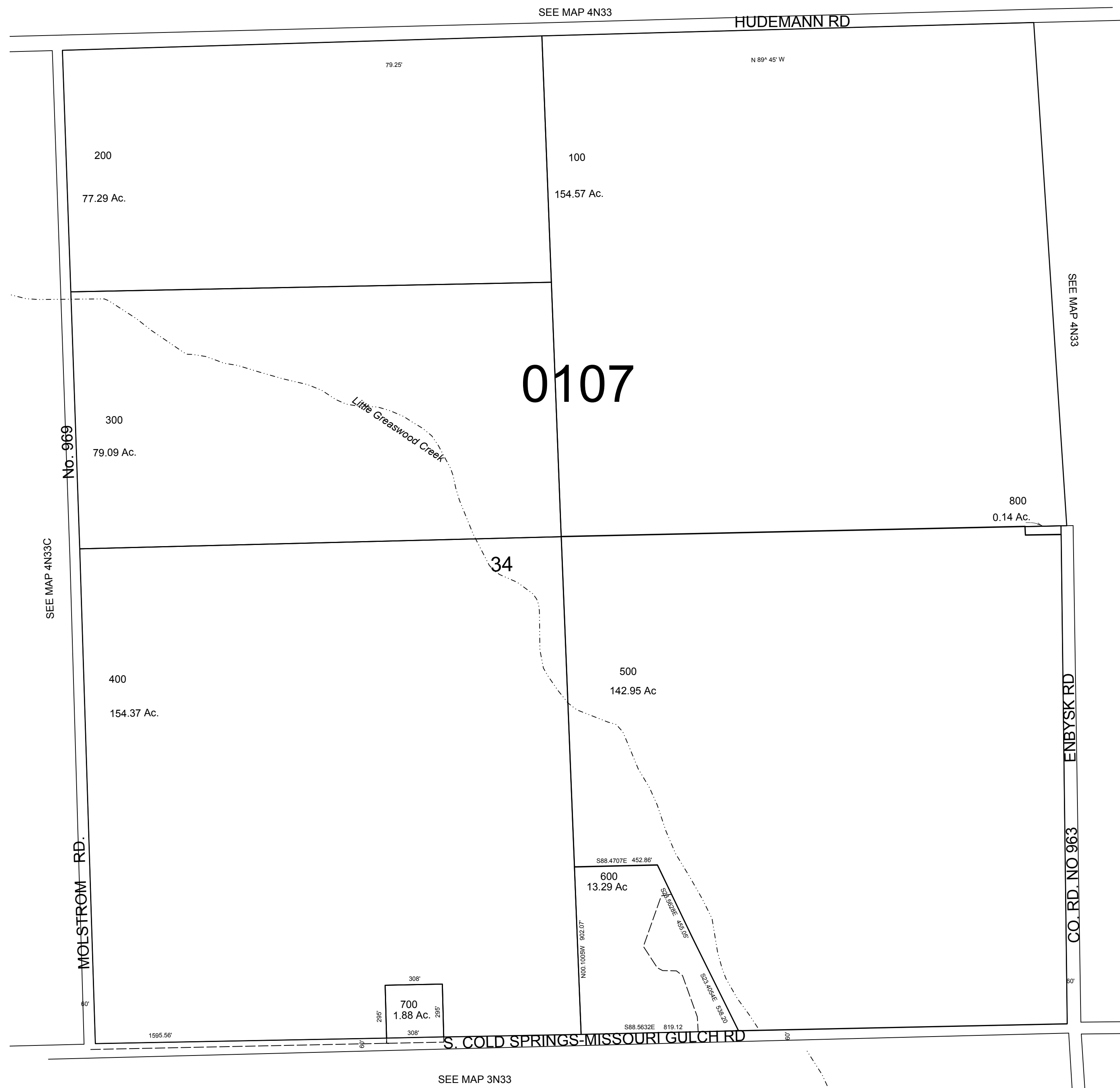


This map was prepared for Assessment & Taxation purposes only and has NOT been prepared for legal, engineering or surveying purposes.

SEC 34 T4N R33E WM UMATILLA COUNTY

SCALE 1"=400'

4N 33 34
AERIAL PHOTO NO NZ 6P 50-54, 106-111 & 127-131



SEE MAP 3N33

Revised: 12-12-16

4N3334