

This map was prepared for Assessment & Taxation purposes only and was NOT prepared nor is it suitable for legal, engineering or surveying purposes.

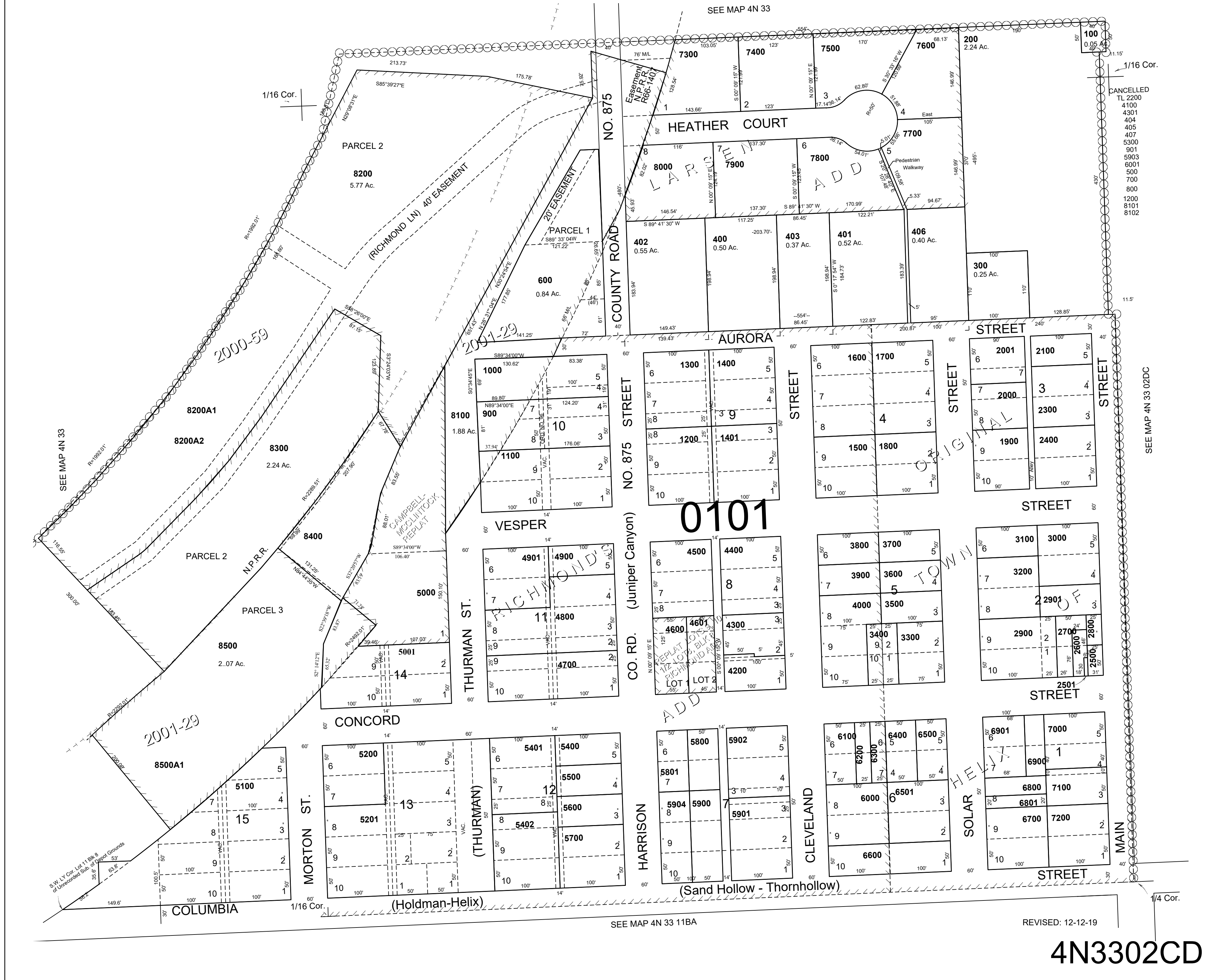
SE1/4 SW1/4 SEC 2 T4NR33 E WM

UMATILLA COUNTY SCALE 1"=100'

4N3302CD

REPLAT OF LOTS 9, 10 & S1/2 OF BLK 8 RICHMONDS ADD

ORIGINAL TOWN HELIX RICHMOND'S ADD LARSEN ADD AERIAL PHOTO NO 5P-54



4N3302CD