

This map was prepared for Assessment & Taxation purposes only and was NOT prepared nor is it suitable for legal, engineering or surveying purposes.

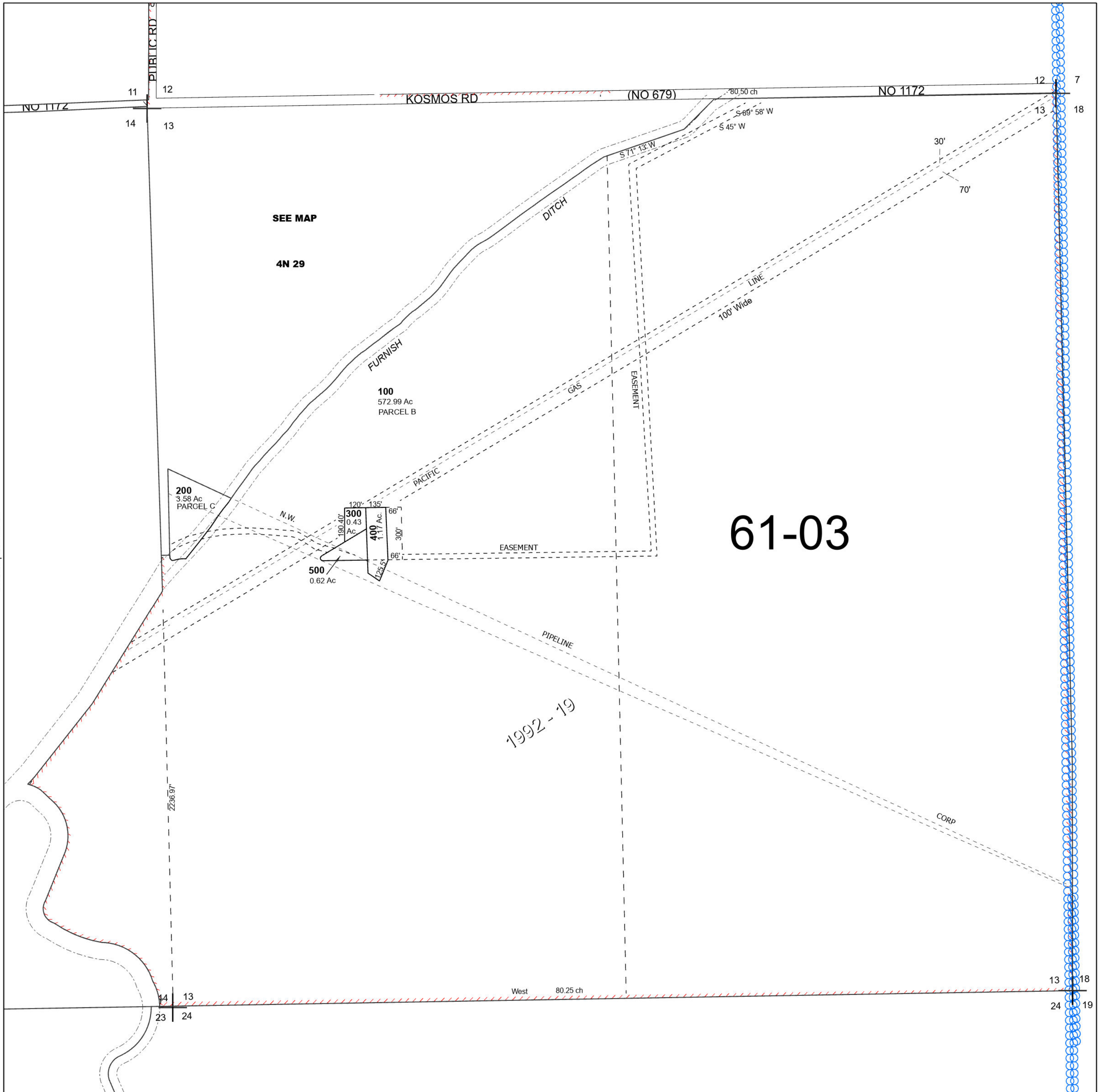
Cancelled Tax Lots

# SEC 13 T4N R29E WM UMATILLA COUNTY

## 4N 29 13

SCALE 1" = 400'

See Map 4N 29



See Map 4N 29 14

See Map 4N 30

Revised 4/24/2024

See Map 4N 29

## 4N 29 13