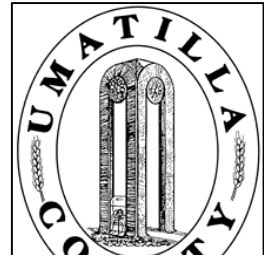
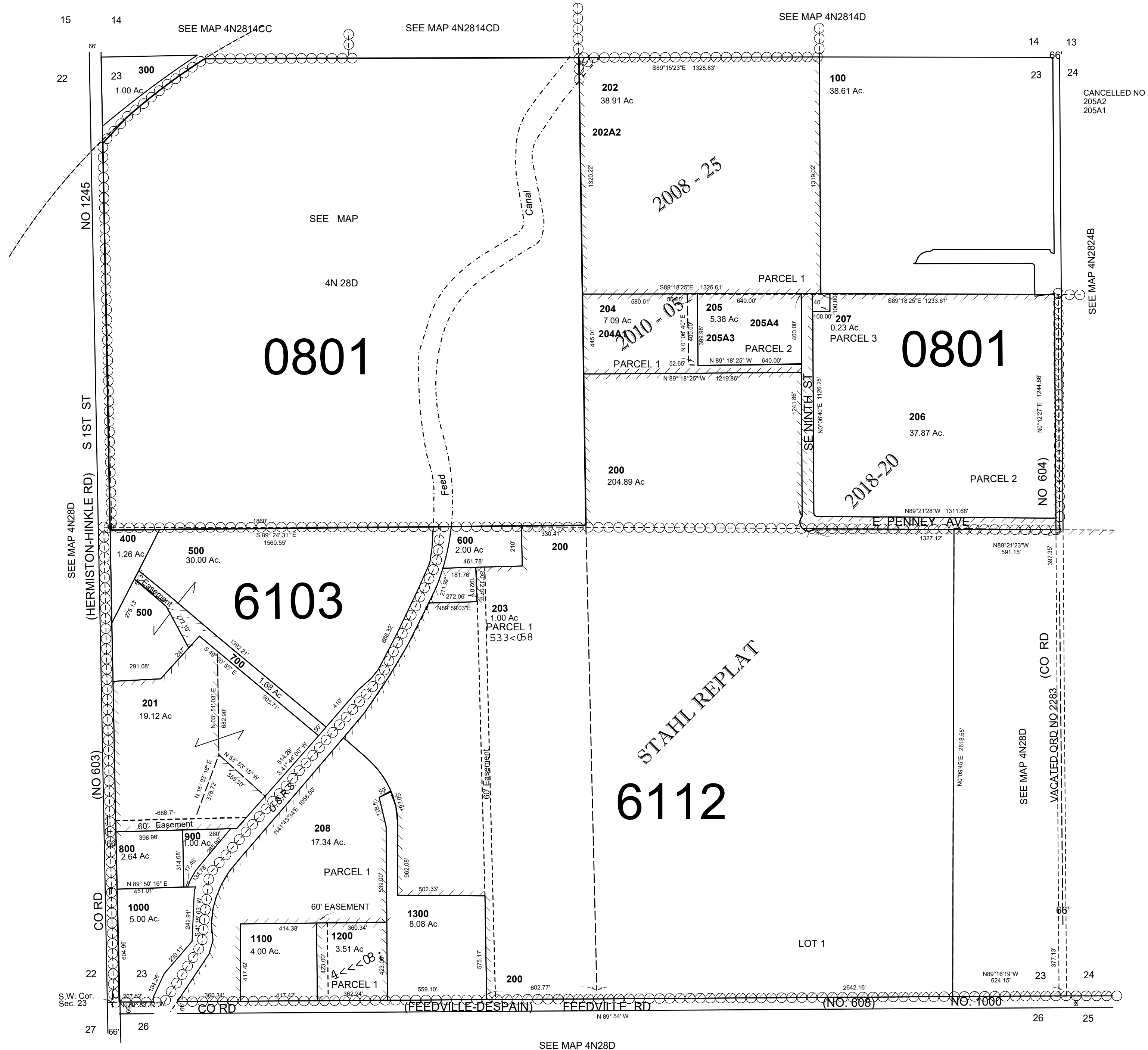


This map was prepared for Assessment & Taxation purposes only and was NOT prepared nor is it suitable for legal, engineering or surveying purposes.



SEC 23 T4N R28E WM  
UMATILLA COUNTY  
SCALE: 1" = 400'

4N 28 23  
AERIAL PHOTO NO. NZ-2P-21-24  
41-42



REVISED: 09-13-2021  
4N 28 23