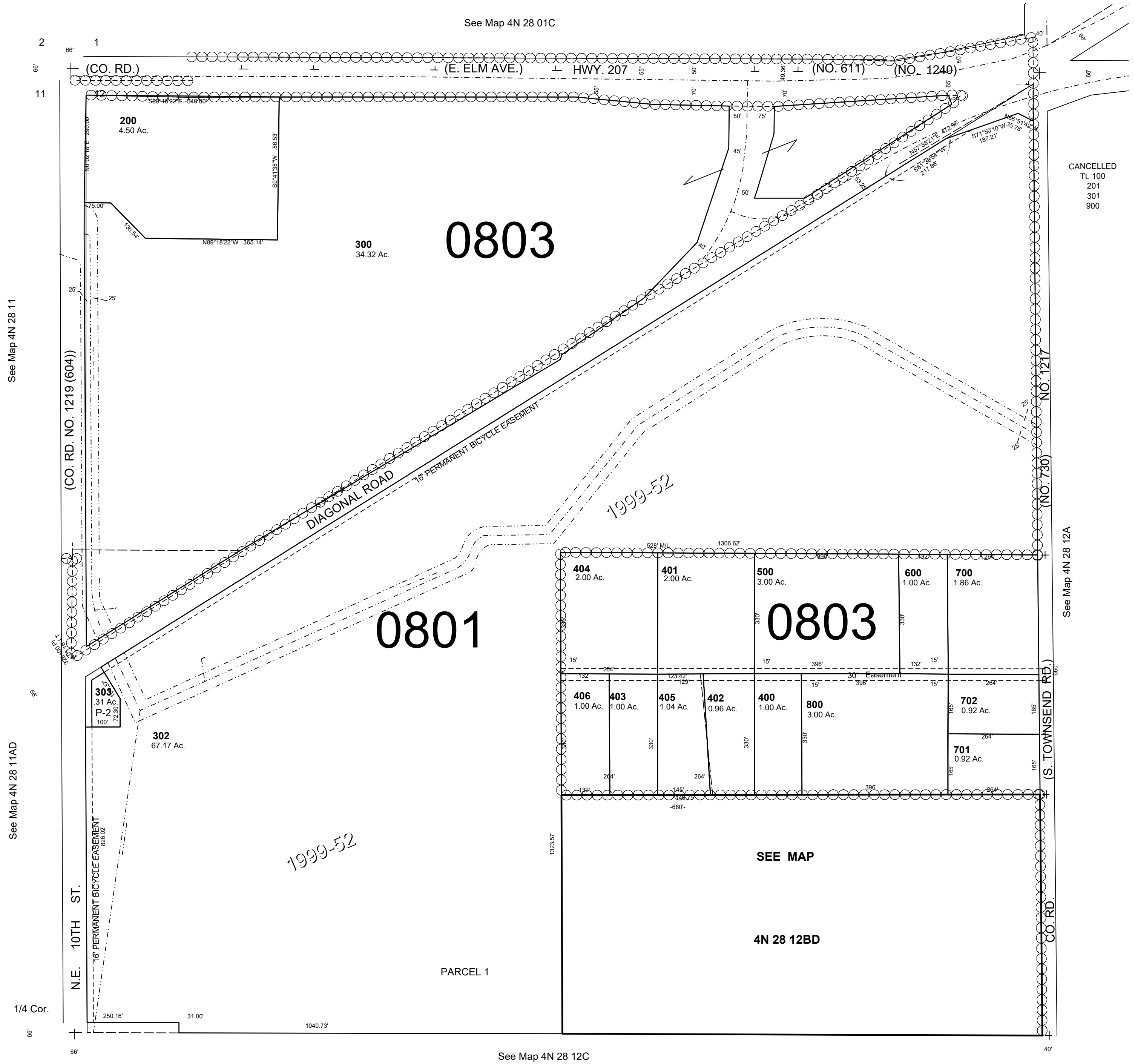


This map was prepared for Assessment & Taxation purposes only and was NOT prepared nor is it suitable for legal, engineering or surveying purposes.

NW1/4 SEC12 T4N R28E WM
 UMATILLA COUNTY
 SCALE 1"=200'

4N 28 12B
 AERIAL PHOTO NO. NZ 1P-125



REVISED 04-08-2020

4N 28 12B