

This map was prepared for Assessment & Taxation purposes only and was NOT prepared nor is it suitable for legal, engineering or surveying purposes.

# NW 1/4 SEC 03 T4N R28E WM UMATILLA COUNTY

## 4N 28 03B

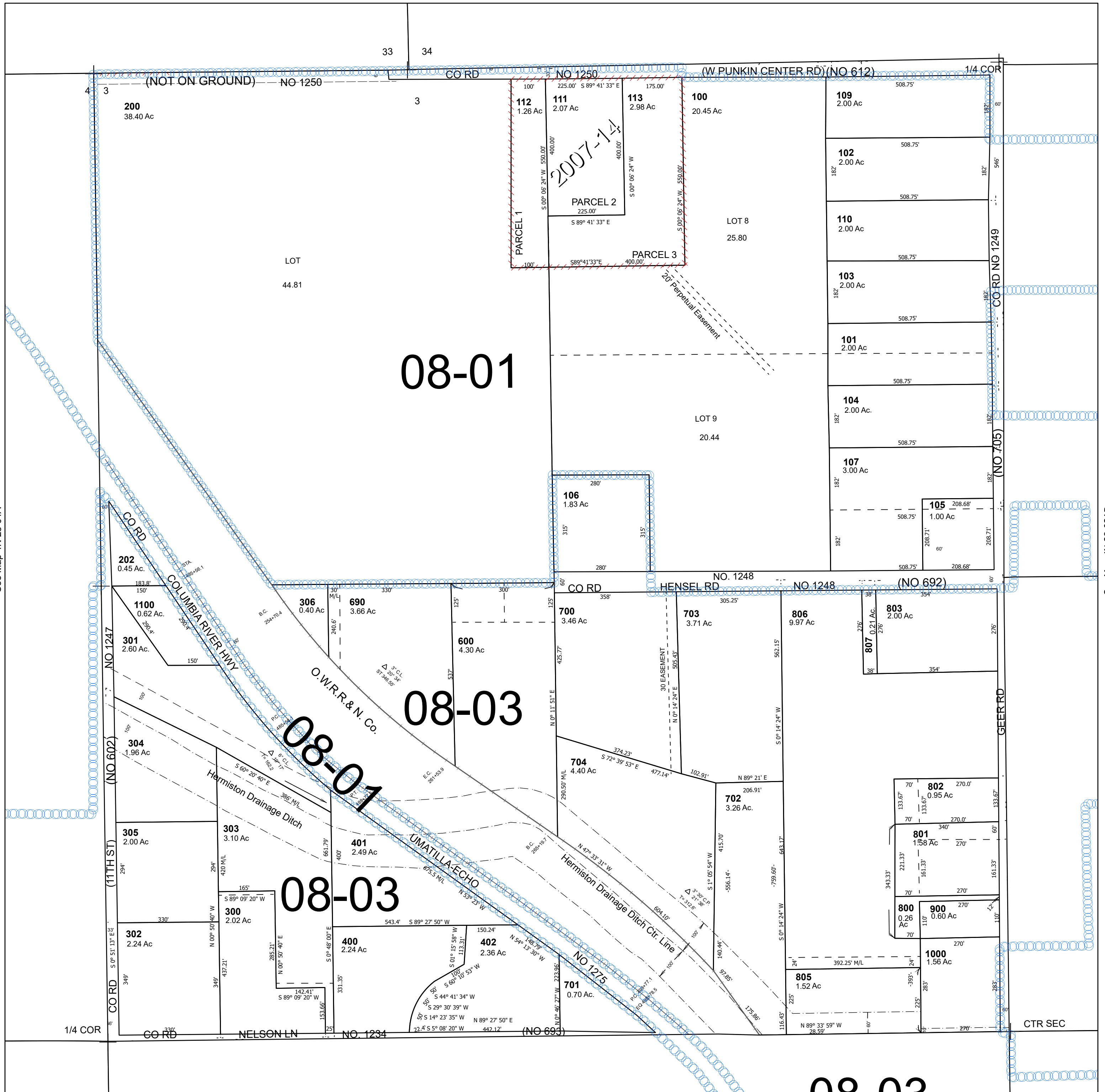
Hermiston

SCALE 1" = 200'

See Map 5N 28 34C

Cancelled Tax Lots

- 108
- 201
- 203
- 500
- 501
- 804
- 808



See Map 4N 28 04A

See Map 4N 28 03AB

## 4N 28 03B