

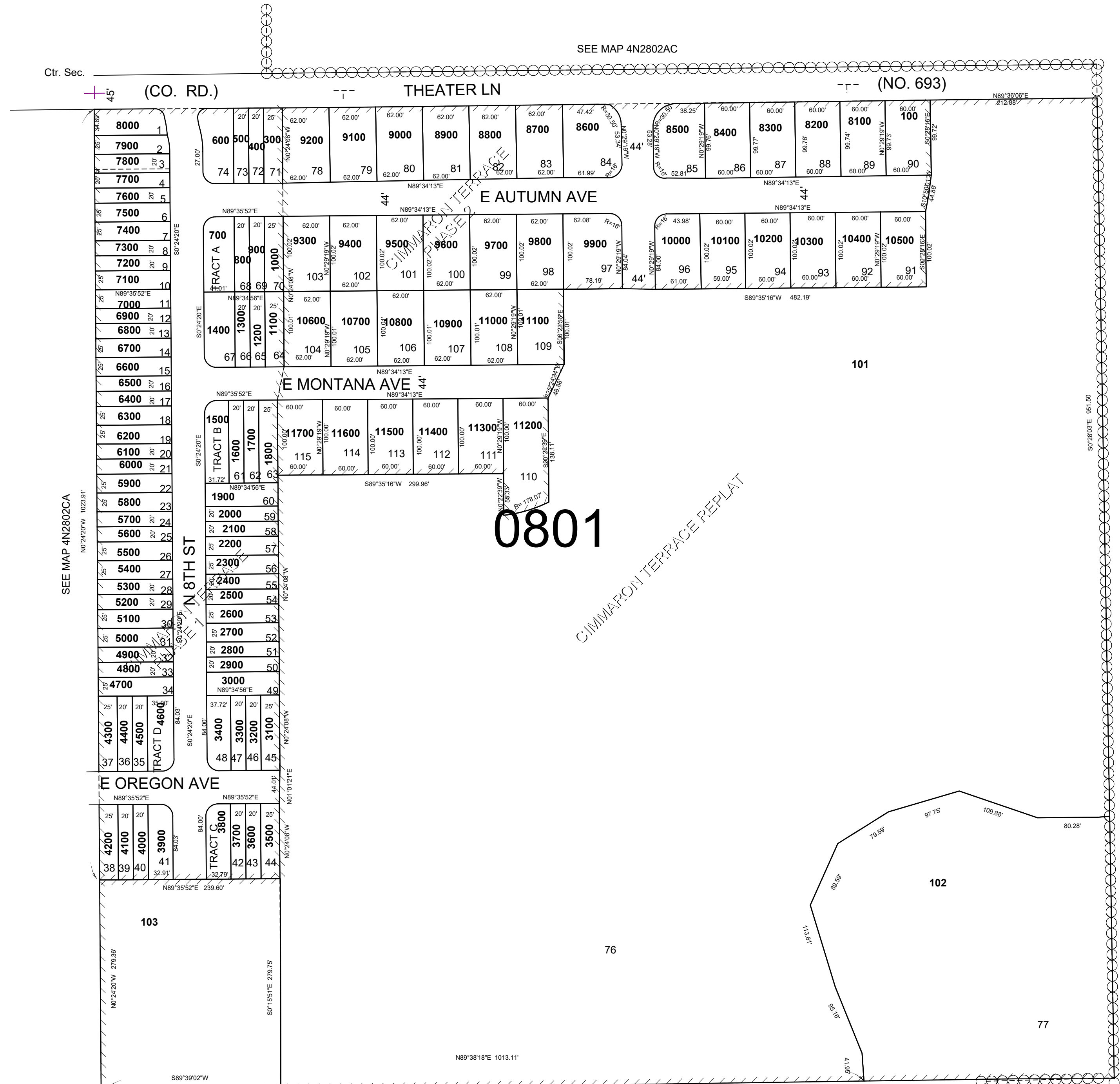
This map was prepared for Assessment & Taxation purposes only and has not been prepared or is it suitable for legal, engineering or surveying purposes.

NW 1/4 SE 1/4 T4 N R28 E WM

UMATILLA COUNTY

SCALE 1"=100'

4N2802DB



CANCELLED NO 200

SEE MAP 4N2802D

REVISED: 05-03-2020

4N2802DB