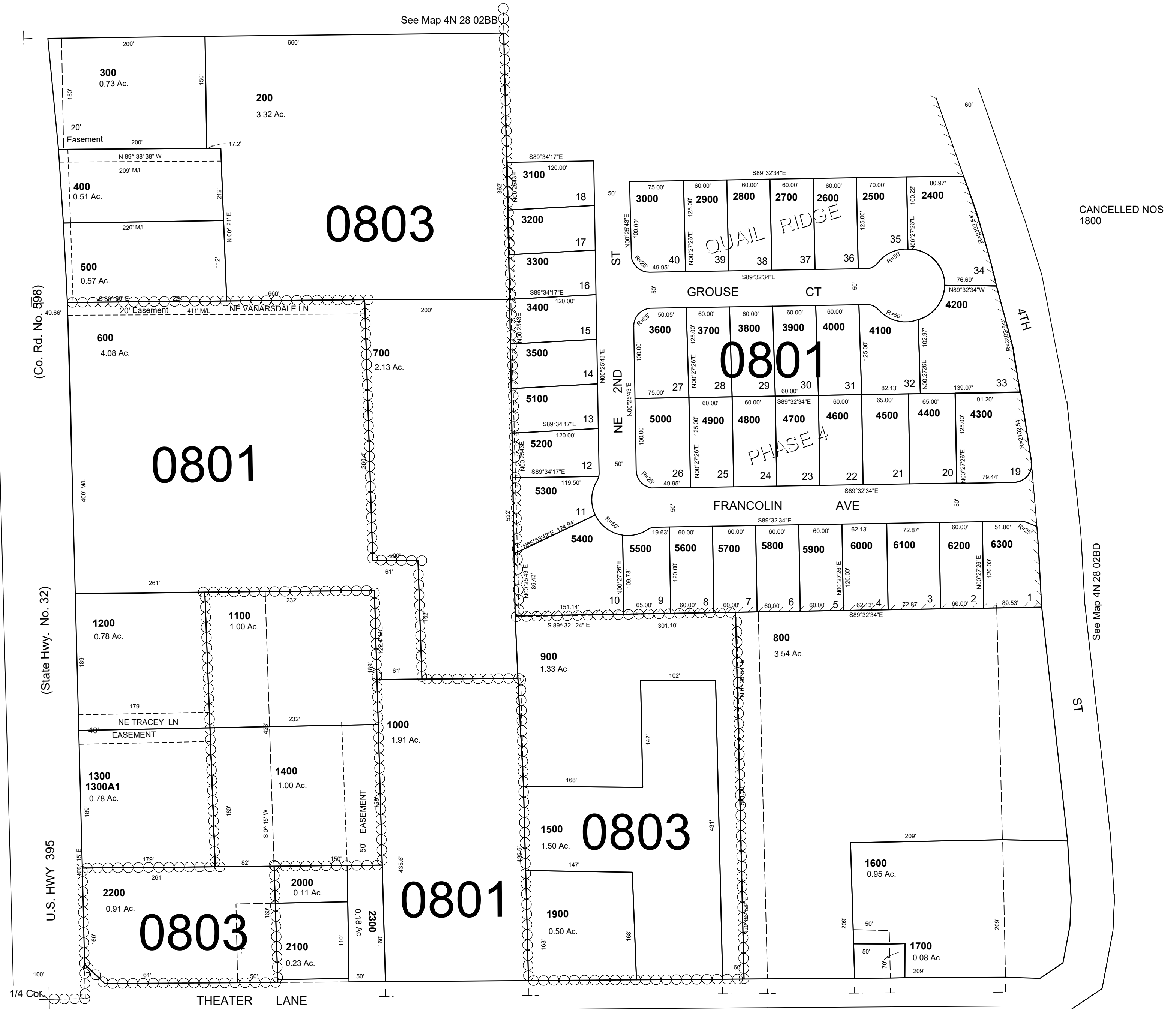


This map was prepared for Assessment & Taxation purposes only and was NOT prepared nor is it suitable for legal, engineering or surveying purposes.

SW 1/4 NW 1/4 SEC 2 T4N R28E WM
UMATILLA COUNTY
SCALE 1"=100'

4N 28 02BC
AERIAL PHOTO NO. 1P-122



4N 28 02BC