

This map was prepared for Assessment & Taxation purposes only and was NOT prepared nor is it suitable for legal, engineering or surveying purposes.

NE 1/4 NW 1/4 SEC 2 T4N R28E WM UMATILLA COUNTY

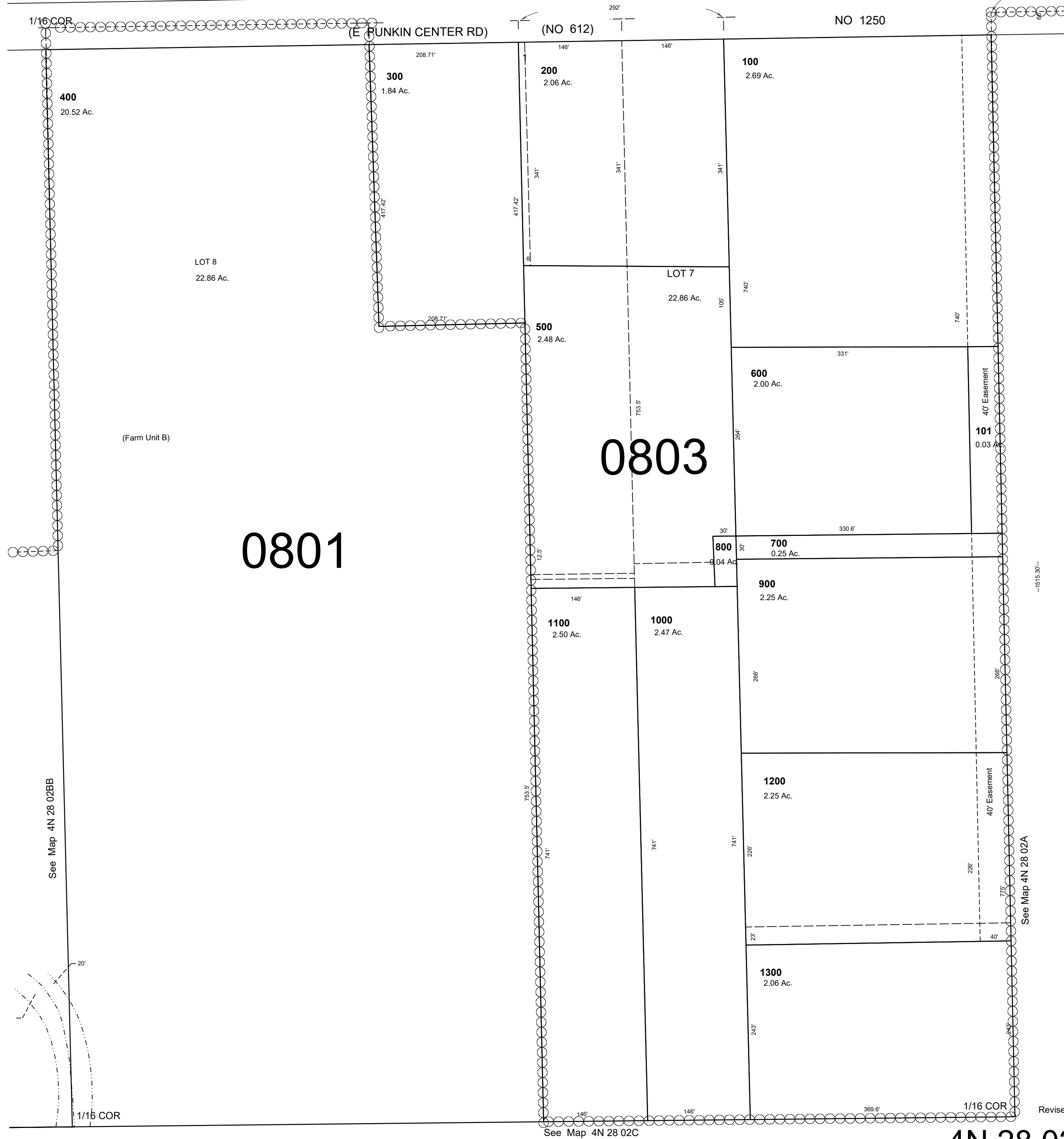
4N 28 02BA

AERIAL PHOTO NO. 1P - 122

SCALE 1"=100'

See Map 5N 28 35 C

1/4 Cor.



See Map 4N 28 02BB

1/16 COR

See Map 4N 28 02C

See Map 4N 28 02A

Revised: 04-22-2020

4N 28 02BA