

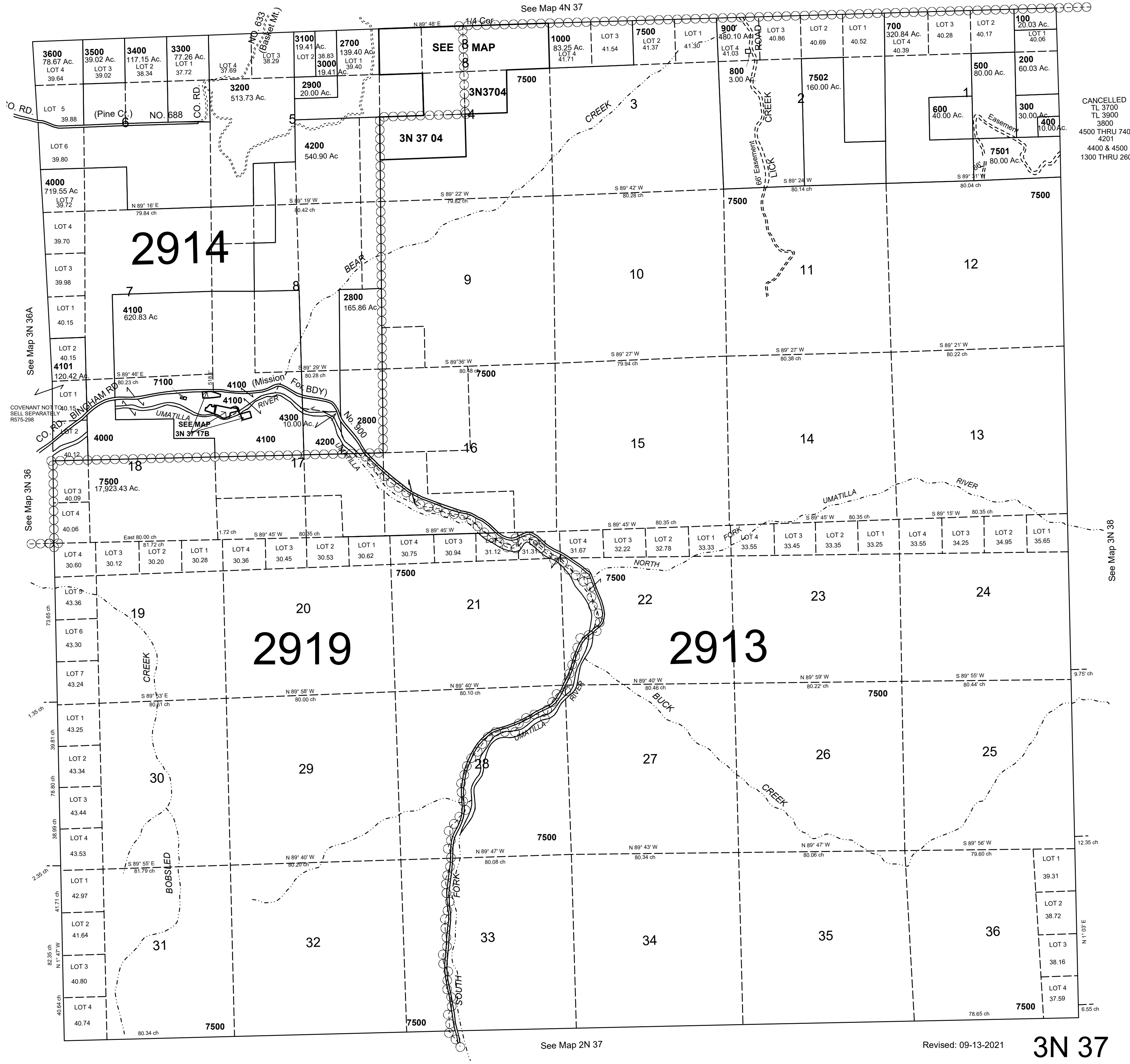
This map was prepared for Assessment & Taxation purposes only and was NOT prepared nor is it suitable for legal, engineering or surveying purposes.

SCALE: 1" = 2000'

T3N R37E WM UMATILLA COUNTY

3N 37

AERIAL PHOTO NO. 5P 137-141 & 149-154



See Map 2N 37

Revised: 09-13-2021

3N 37