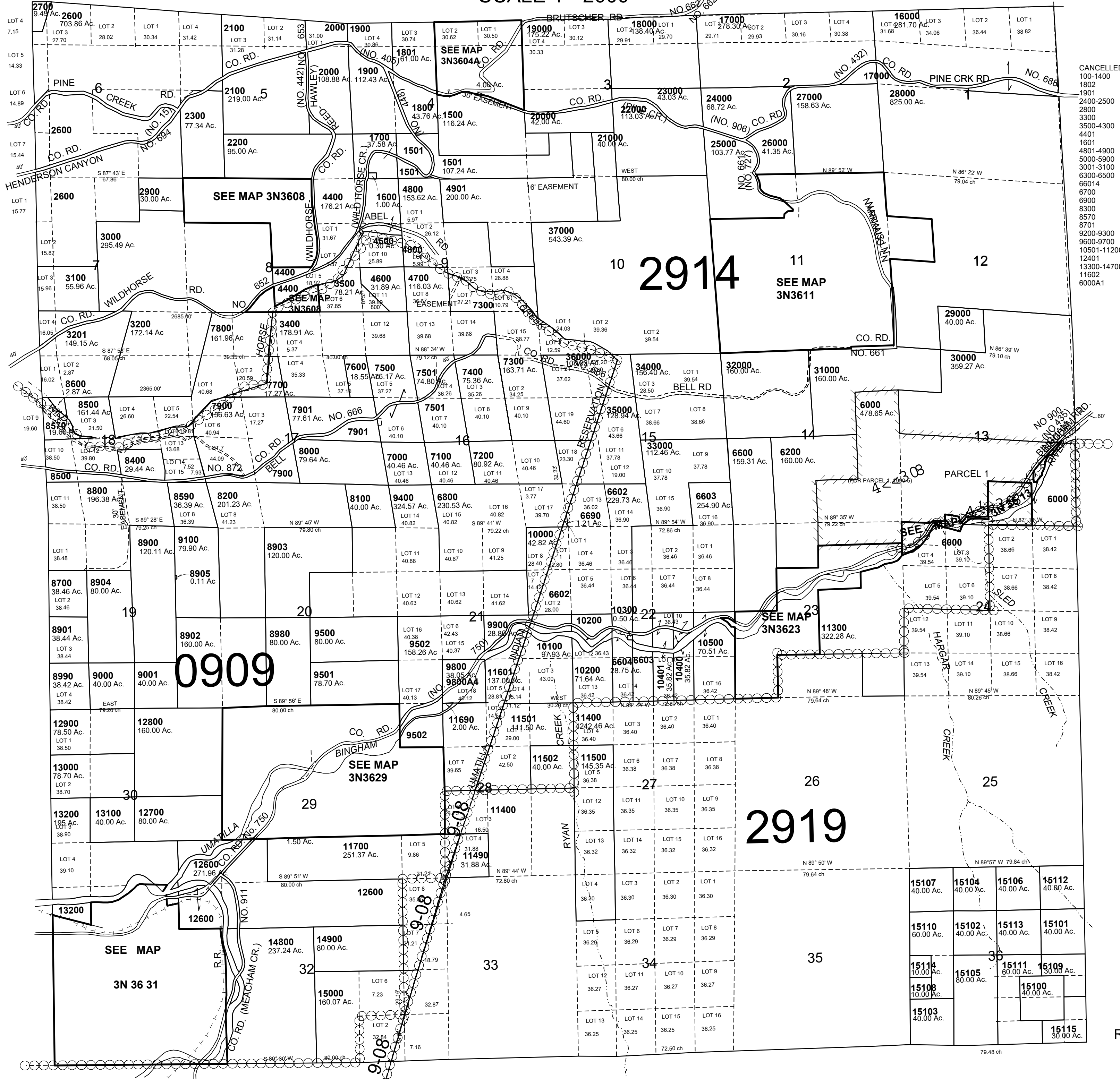


This map was prepared for Assessment & Taxation purposes only and was NOT prepared nor is it suitable for legal, engineering or surveying purposes.

T3N R36E WM UMATILLA COUNTY

3N36

SCALE 1"=2000'



- CANCELLED
100-1400
1802
1901
2400-2500
2800
3300
3500-4300
4401
1601
4801-4900
5000-5900
3001-3100
6300-6500
66014
6700
6900
8300
8570
8701
9200-9300
9600-9700
10501-11200
12401
13300-14700
11602
6000A1

0909

2914

2919

SEE MAP
3N 36 31

Revised: 09-13-2021

3N 36