

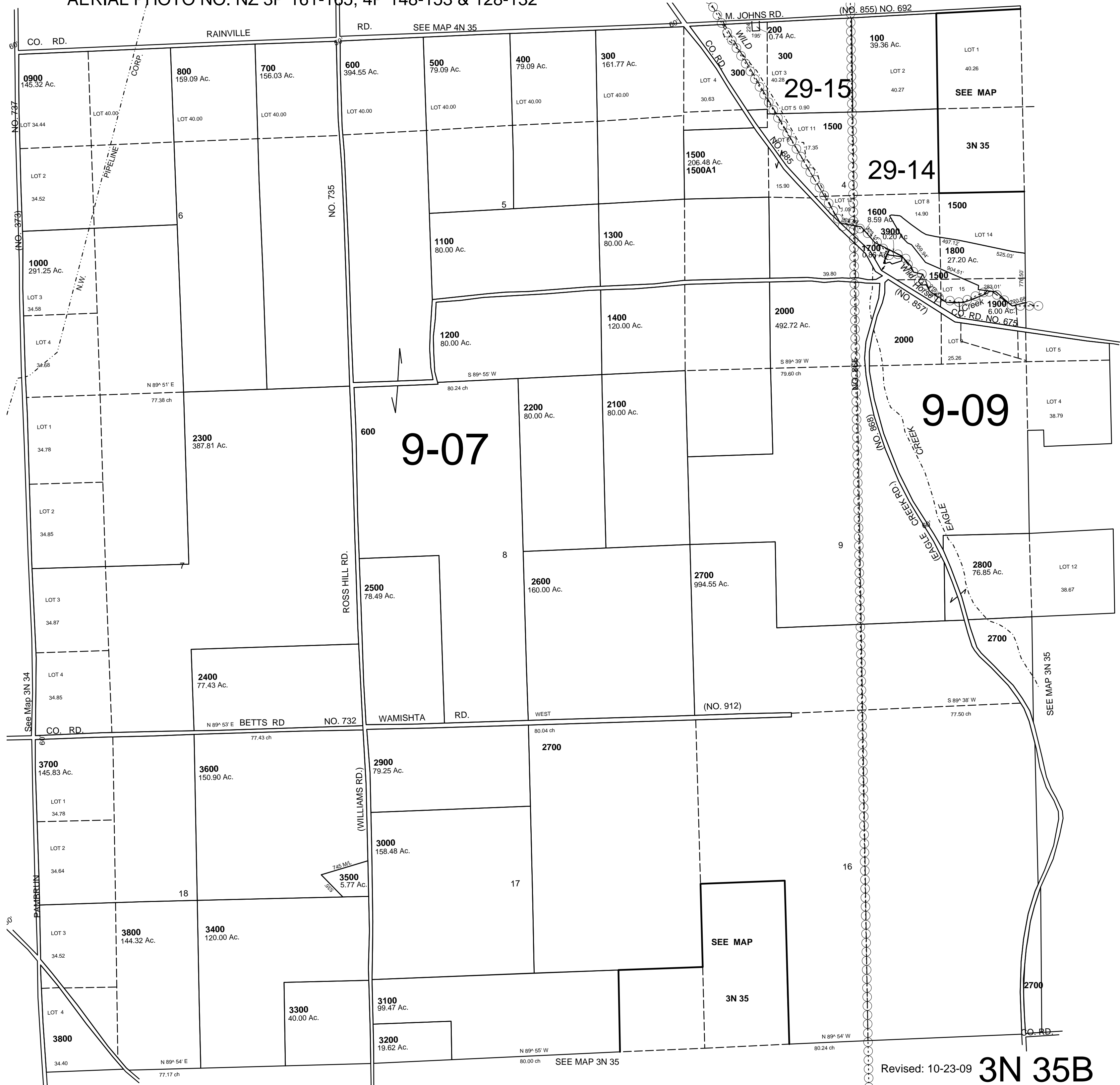
This map was prepared for Assessment & Taxation purposes only and was NOT prepared nor is it suitable for legal, engineering or surveying purposes.

NW 1/4 T3N R35E WM UMATILLA COUNTY

3N 35B

AERIAL PHOTO NO. NZ 3P 161-165, 4P 148-153 & 128-132

SCALE
1" = 1000'



Revised: 10-23-09 **3N 35B**