

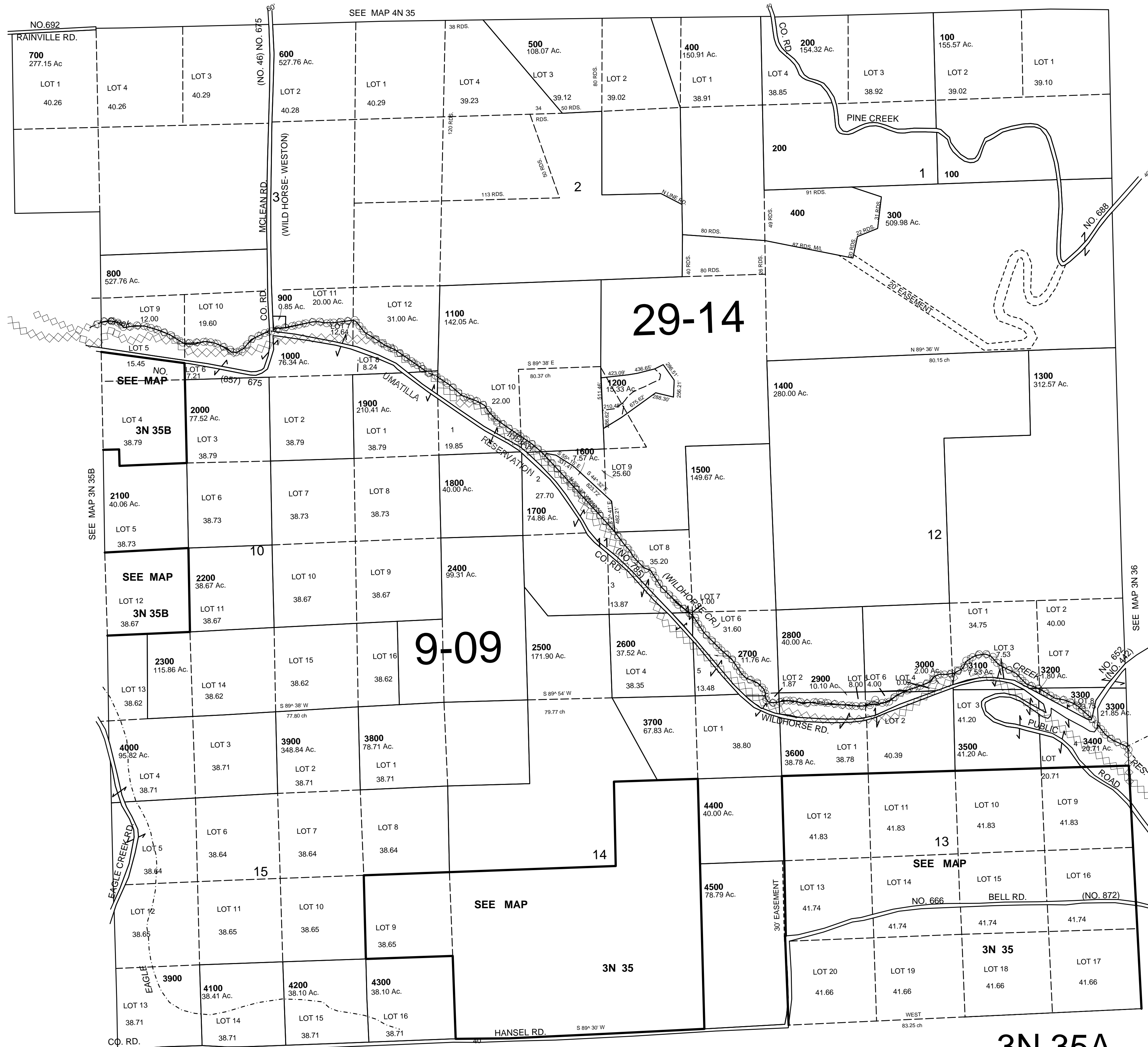
This map was prepared for Assessment & Taxation purposes only and was NOT prepared nor is it suitable for legal, engineering or surveying purposes.

# NE1/4 T3N R35E WM UMATILLA COUNTY

AERIAL PHOTO NO. NZ 3P 161-165, 4P 128-132 & 148-153

## 3N 35A

1"=1000'



SEE MAP 3N 35

Revised: 12-09-09

## 3N 35A