

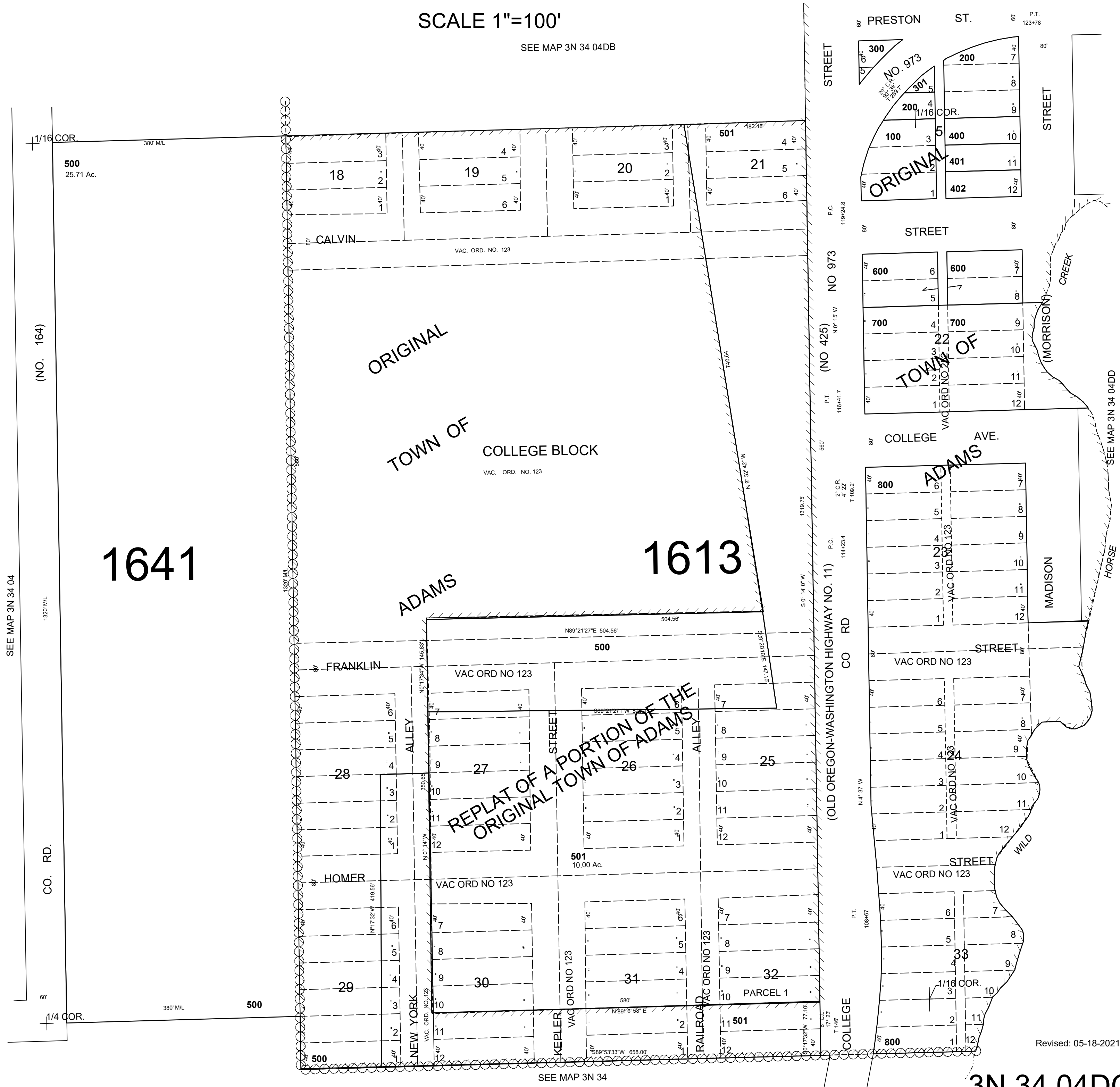
This map was prepared for Assessment & Taxation purposes only and was NOT prepared nor is it suitable for legal, engineering or surveying purposes.

SW1/4 SE1/4 SEC 4 T3N R34E WM UMATILLA COUNTY

3N 34 04DC
AERIAL PHOTO NO. 5P-169

SCALE 1"=100'

SEE MAP 3N 34 04DB



Revised: 05-18-2021

3N 34 04DC