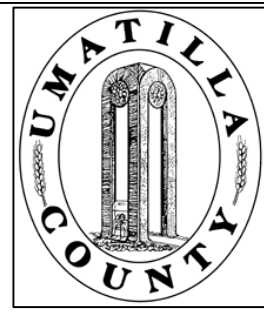


This map was prepared for Assessment & Taxation purposes only and was NOT prepared nor is it suitable for legal, engineering and surveying purposes.

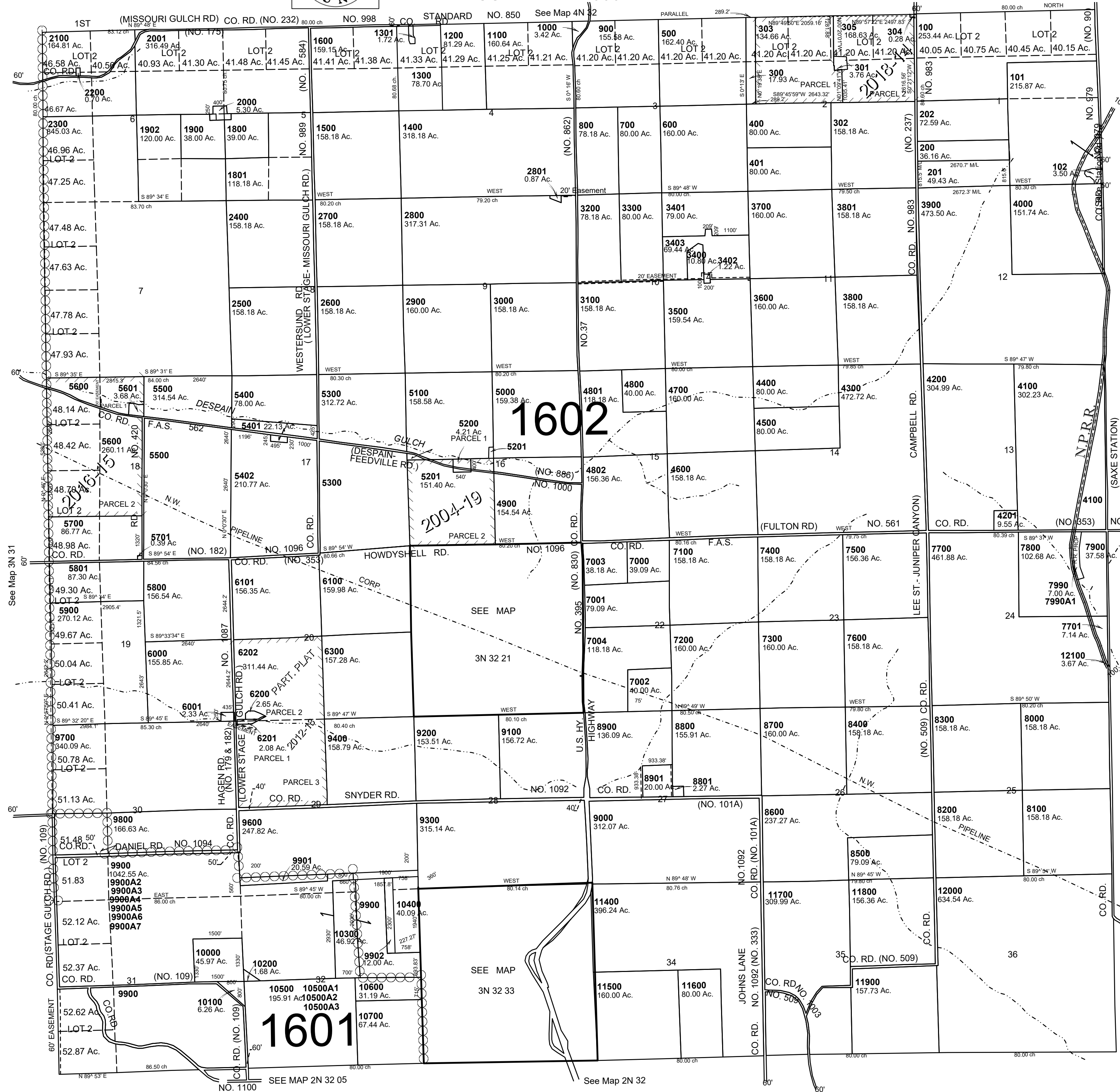


# T3N R32E WM UMATILLA COUNTY

SCALE: 1" = 2000'

## 3N 32

AERIAL PHOTO NO. NZ-5P 179-182 & 4P 165-168  
2P 130-131 & 4P 114-116



- CANCELLED NOS
- 1700
- 1901
- 3501
- 6400 thru 6900
- 6902
- 9001
- 9301
- 10901 thru 10903
- 11000
- 11002 thru 11006
- 11100
- 11101
- 11200
- 11201
- 11300
- 11401
- 9500
- 6200A1

Revised: 10-09-18  
**3N 32**