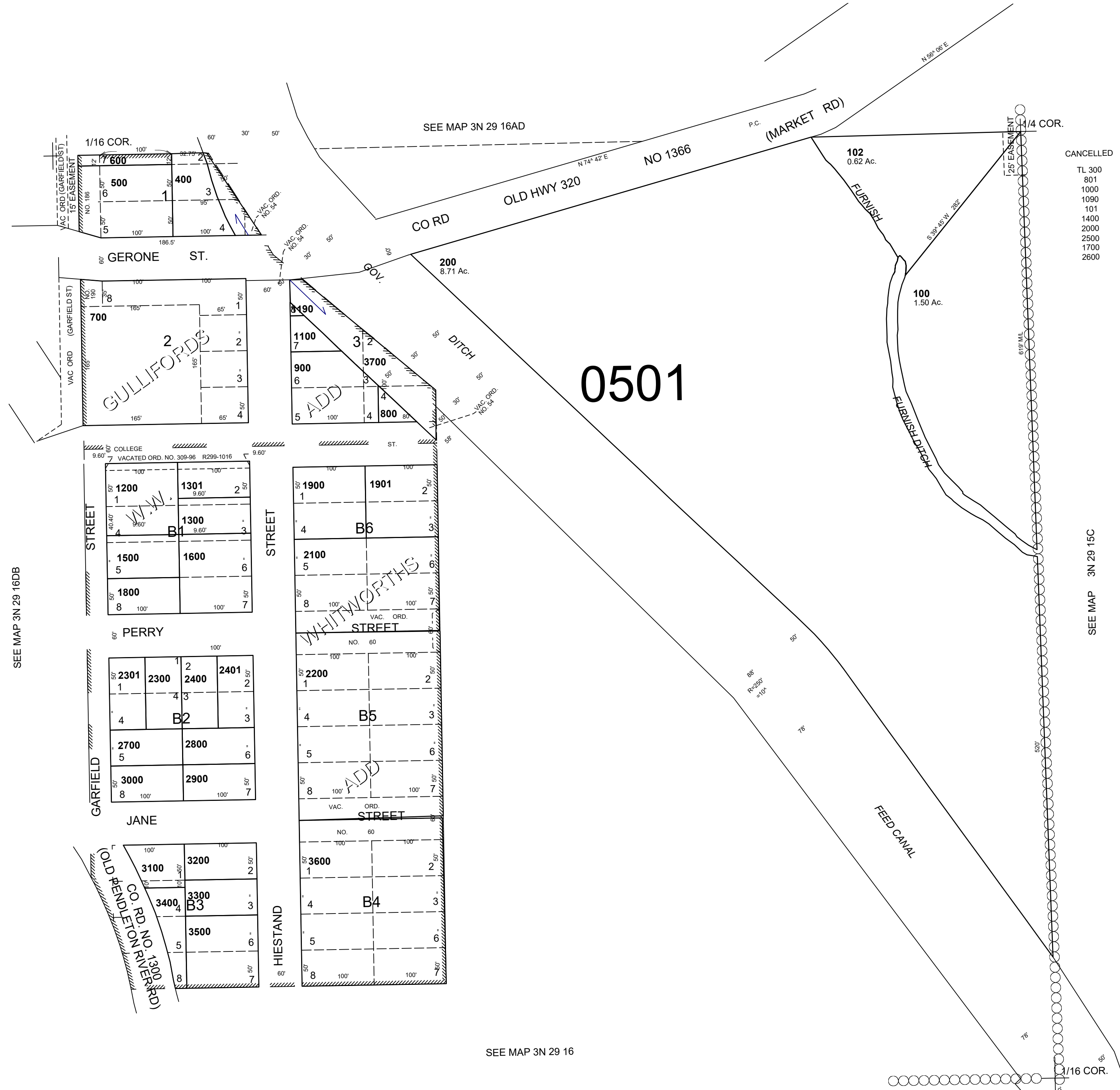


This map was prepared for Assessment & Taxation purposes only and was NOT prepared nor is it suitable for legal, engineering or surveying purposes.

NE1/4 SE1/4 SEC 16 T3N R29E WM UMATILLA COUNTY

3N 29 16DA

AERIAL PHOTO NO. NZ 2P-111



- CANCELLED
- TL 300
 - 801
 - 1000
 - 1090
 - 101
 - 1400
 - 2000
 - 2500
 - 1700
 - 2600

SEE MAP 3N 29 16DB

SEE MAP 3N 29 15C

SEE MAP 3N 29 16

REVISED: 05-30-19

3N 29 16DA