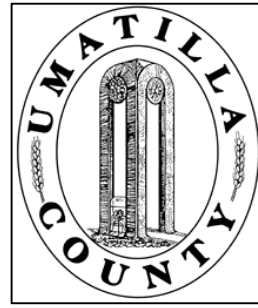


This map was prepared for Assessment & Taxation purposes only and was NOT prepared nor is it suitable for legal, engineering or surveying purposes.

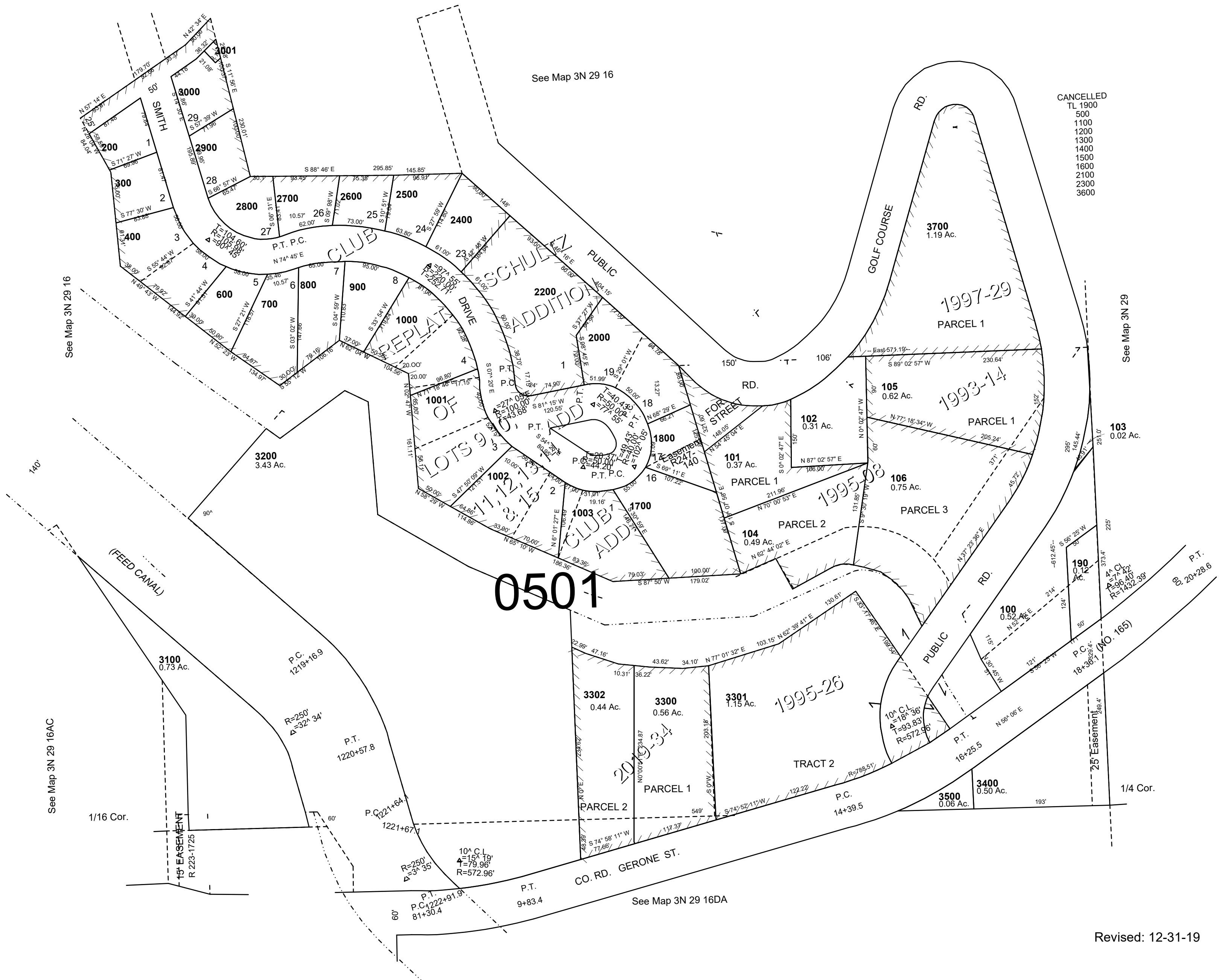


SE1/4 NE1/4 SEC 16 T 3N R 29E WM UMATILLA COUNTY, OR

3N2916AD

SCALE: 1" = 100'

AERIAL PHOTO NO. NZ-2P-111



CANCELLED
TL 1900
500
1100
1200
1300
1400
1500
1600
2100
2300
3600

3N2916AD