

This map was prepared for Assessment & Taxation purposes only and was NOT prepared nor is it suitable for legal, engineering or surveying purposes.

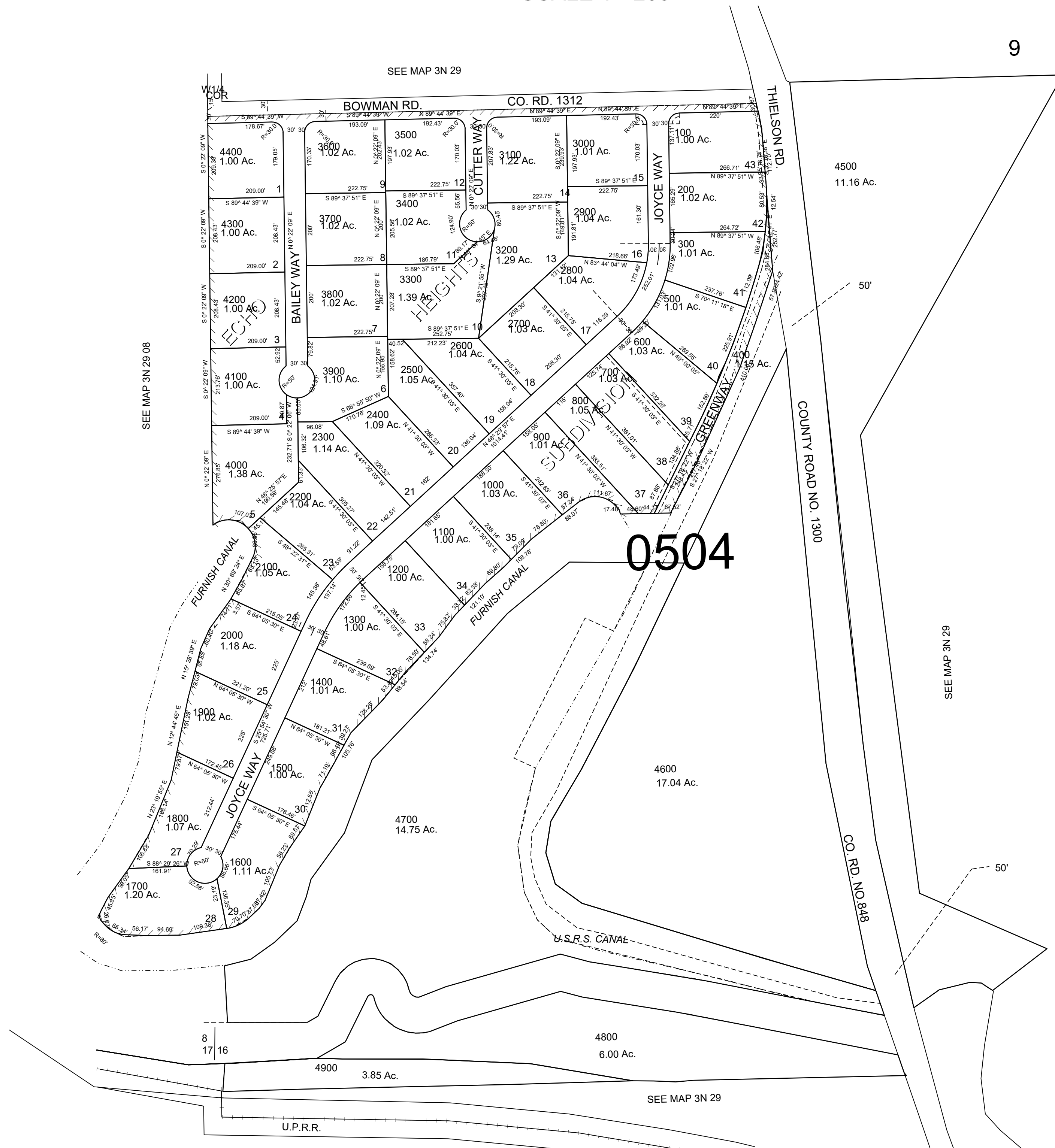
# SW 1/4 SEC 9 T3N R29E WM UMATILLA COUNTY

SCALE 1"=200'

3N 29 09C

9

CENTER 1/4 SEC



SEE MAP 3N 29 08

SEE MAP 3N 29

SEE MAP 3N 29

0504

REVISED: 03-04-2021

3N 29 09C