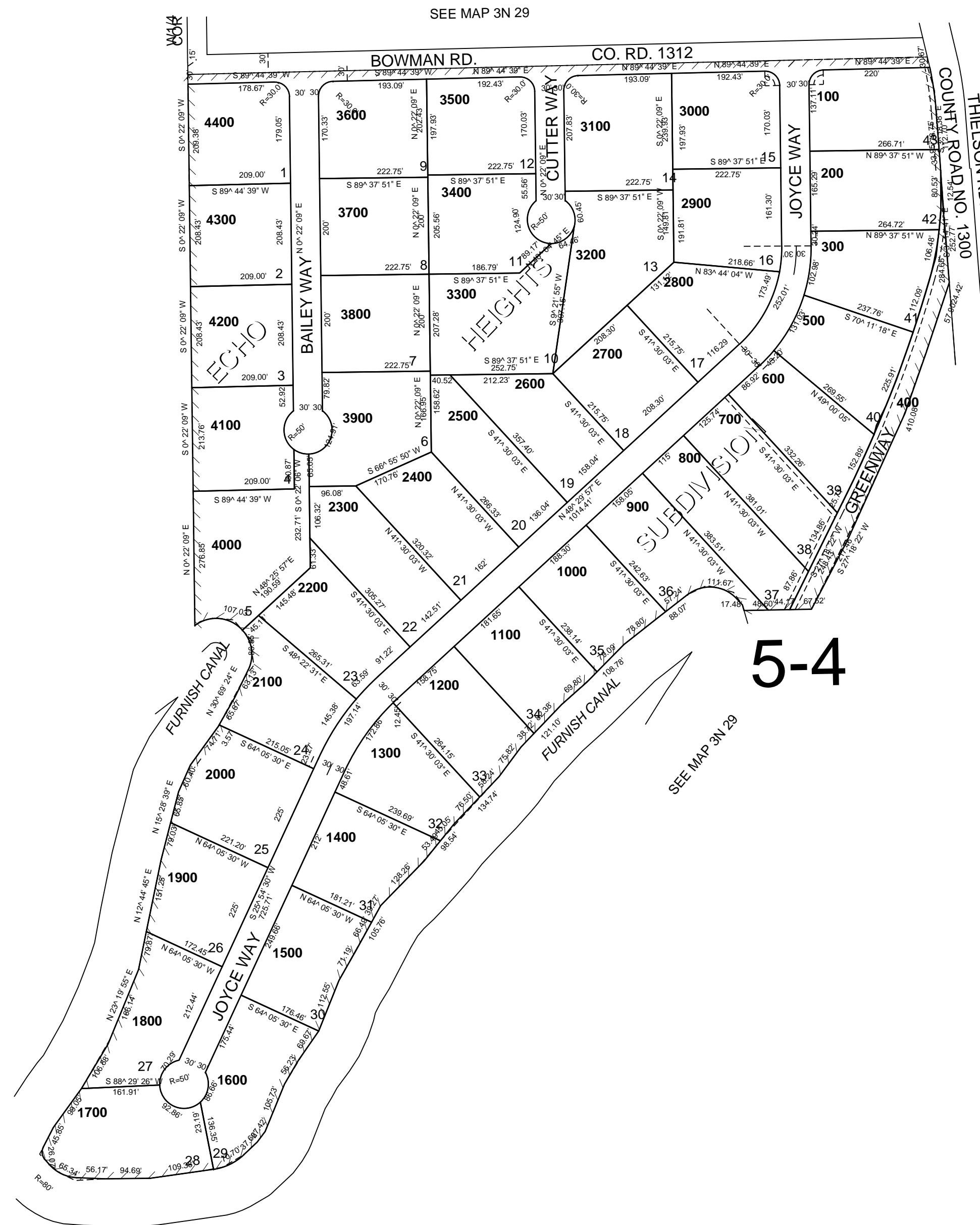


This map was prepared for Assessment & Taxation purposes only and was NOT prepared nor is it suitable for legal, engineering or surveying purposes.

SW 1/4 SEC 9 T3N R29E WM  
UMATILLA COUNTY  
SCALE 1"=200'

9/13/06

3N 29 09C



SEC 8 SEC 9

3N 29 09C