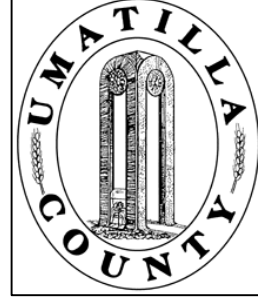


This map was prepared for Assessment & Taxation purposes only and was NOT prepared nor is it suitable for legal, engineering or surveying purposes.

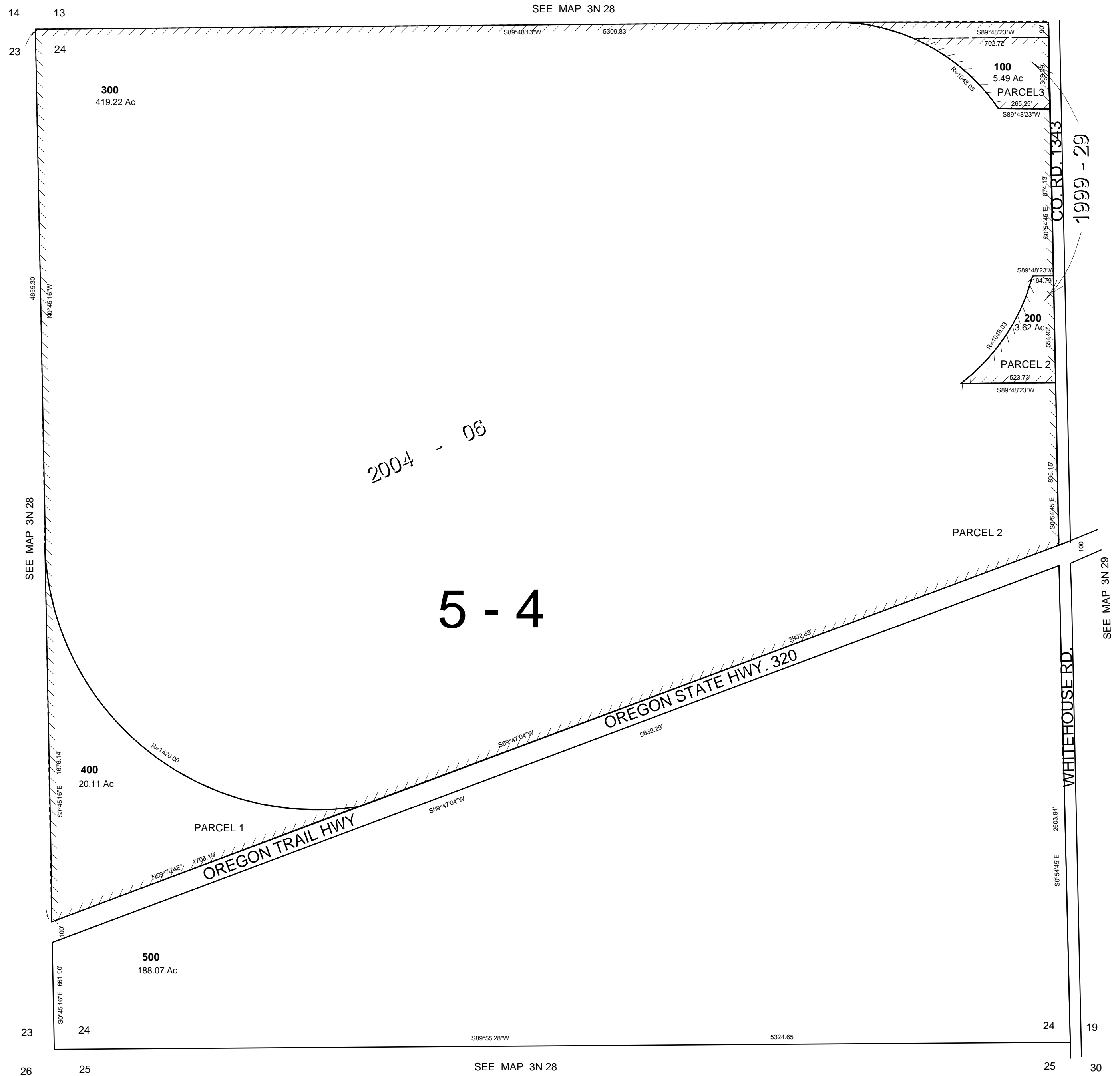


SEC 24 T 3N R 28E WM UMATILLA COUNTY, OR

SCALE: 1" = 400'

3N 28 24

AERIAL PHOTO NO. NZ-2P-85-91
103-108
148-155



Revised: 7/10/09
3N 28 24