

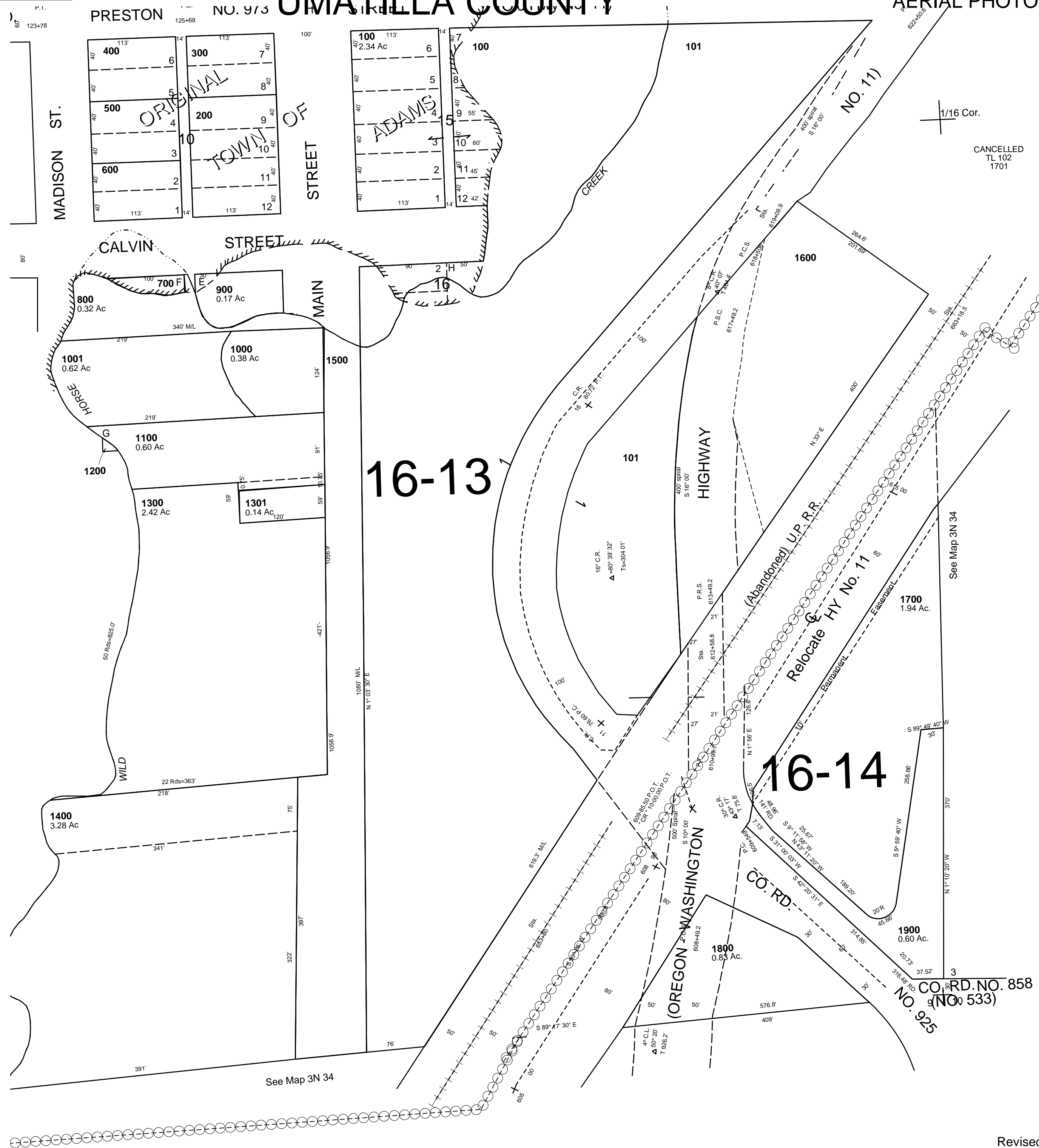
This map was prepared for Assessment and Taxation purposes only and has NOT been prepared for legal, engineering or surveying purposes.

SE1/4 SE1/4 SEC 4 T3N R34E WM UMATILLA COUNTY

3N 34 04DD

AERIAL PHOTO NO. 5P - 169

SCALE: 1" = 100'



Revised: 2-25-11

3N 34 04DD