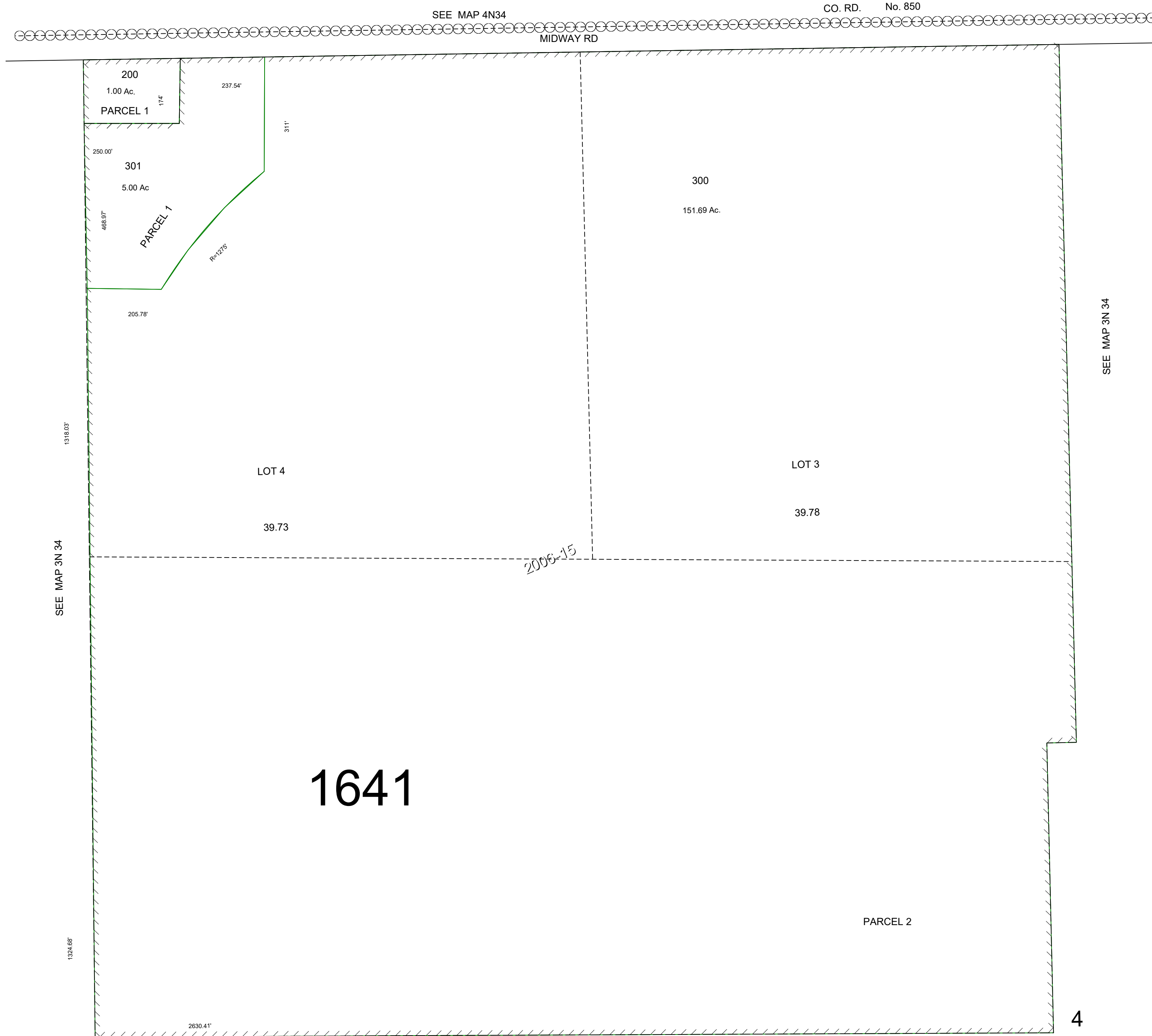


This map was prepared for Assessment & Taxation purposes only and was NOT prepared nor is it suitable for legal, engineering or surveying purposes.

NW 1/4 SEC 4 T3N R34E WM UMATILLA COUNTY, OR

3N3404B

SCALE: 1" = 200'



SEE MAP 3N34

REVISED:04-02-2021

3N3404B