

This map was prepared for Assessment & Taxation purposes only and was NOT prepared nor is it suitable for legal, engineering or surveying purposes.

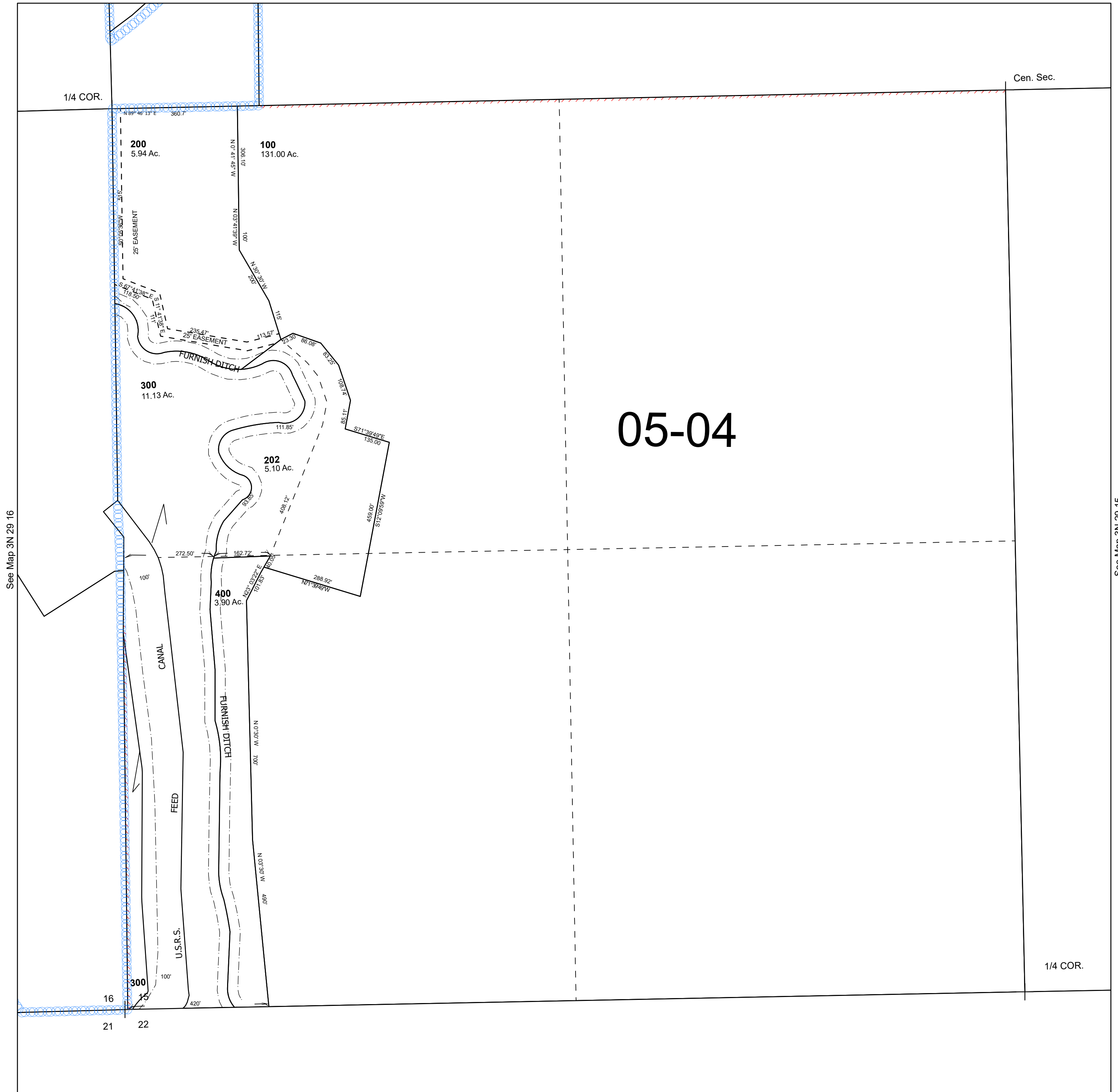
Cancelled Tax Lots
201

SW 1/4 SEC 15 T3N R29E WM UMATILLA COUNTY

3N 29 15C

SCALE 1" = 200'

See Map 3N 29



See Map 3N 29 16

See Map 3N 29 15

Revised 7/19/2024

See Map 3N 29 22

3N 29 15C