

This map was prepared for Assessment & Taxation purposes only and was NOT prepared nor is it suitable for legal, engineering or surveying purposes.

NE 1/4 NW 1/4 SEC 05 T3N R29E WM UMATILLA COUNTY

SCALE 1" = 100'

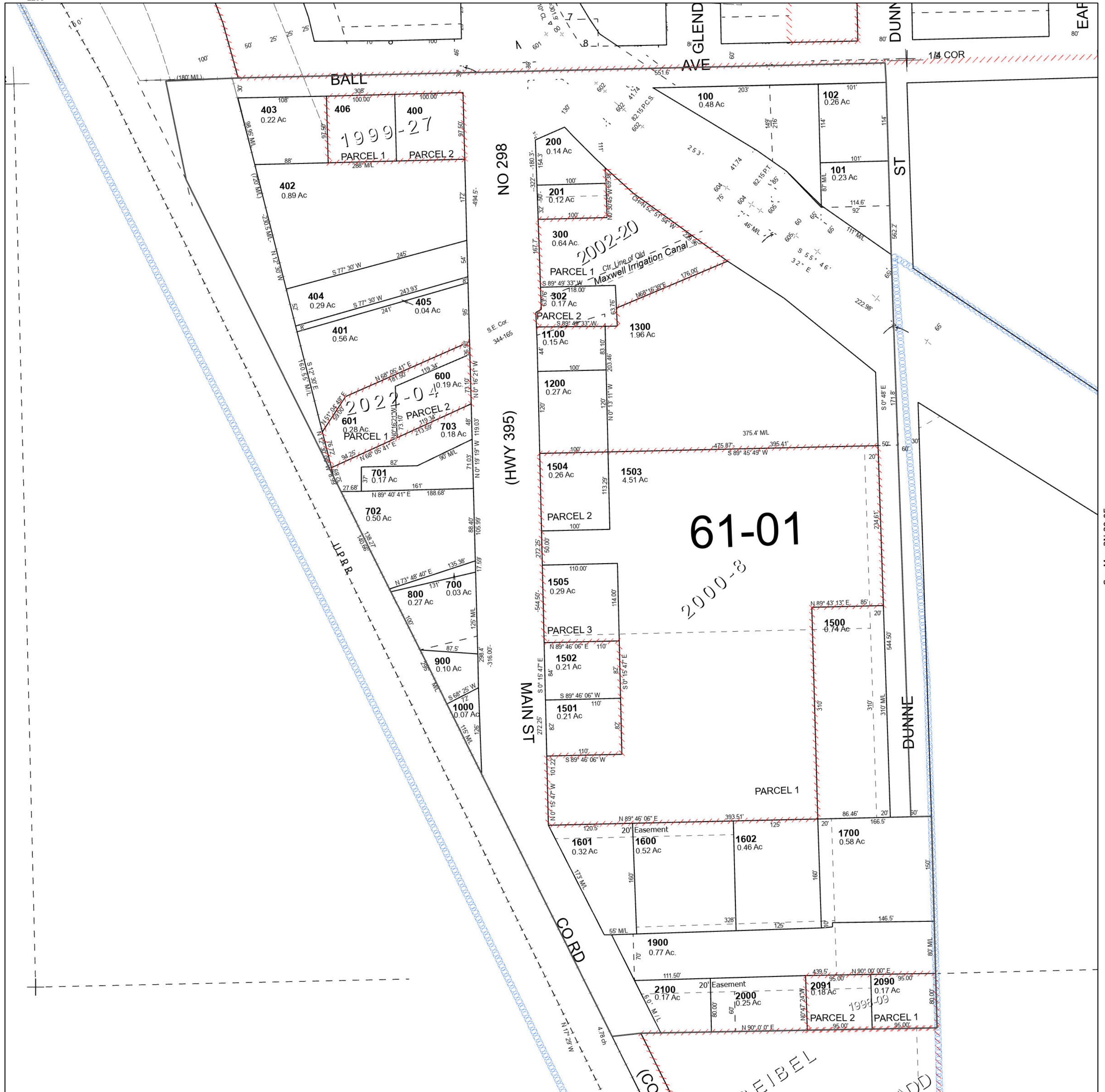
Stanfield

3N 29 05BA

Cancelled Tax Lots

- | | |
|------|------|
| 103 | 2300 |
| 104 | 2400 |
| 202 | 2401 |
| 301 | |
| 500 | |
| 1301 | |
| 1302 | |
| 1400 | |
| 1800 | |
| 2200 | |

See Map 4N 29 32CD



See Map 3N 29 05

See Map 3N 29 05