

This map was prepared for Assessment & Taxation purposes only and was NOT prepared nor is it suitable for legal, engineering or surveying purposes.

Cancelled Tax Lots

NW 1/4 NE 1/4 SEC 05 T3N R29E WM

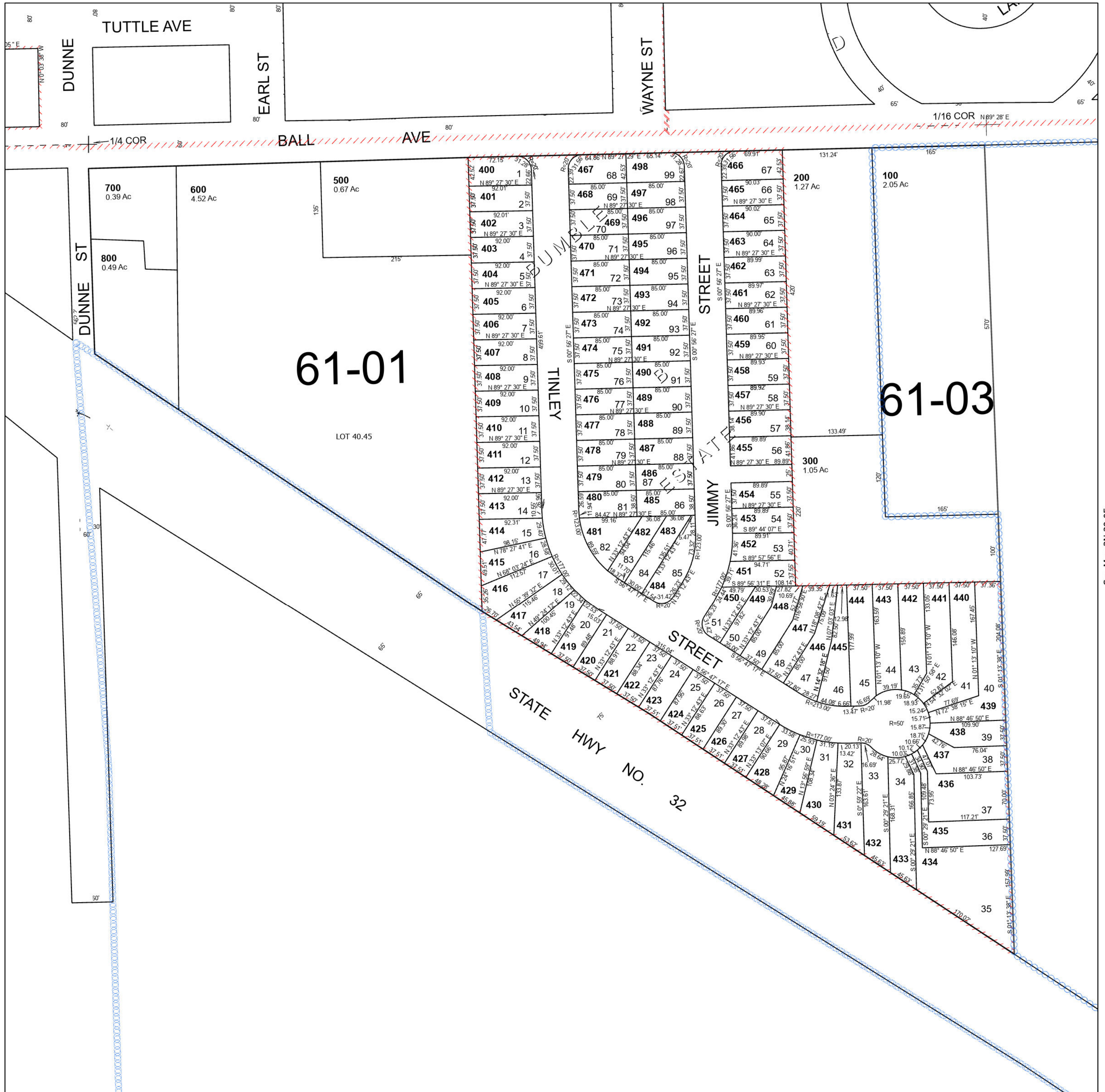
UMATILLA COUNTY

SCALE 1" = 100'

Stanfield

3N 29 05AB

See Map 4N 29 32DC



See Map 3N 39 05BA

See Map 3N 29 05