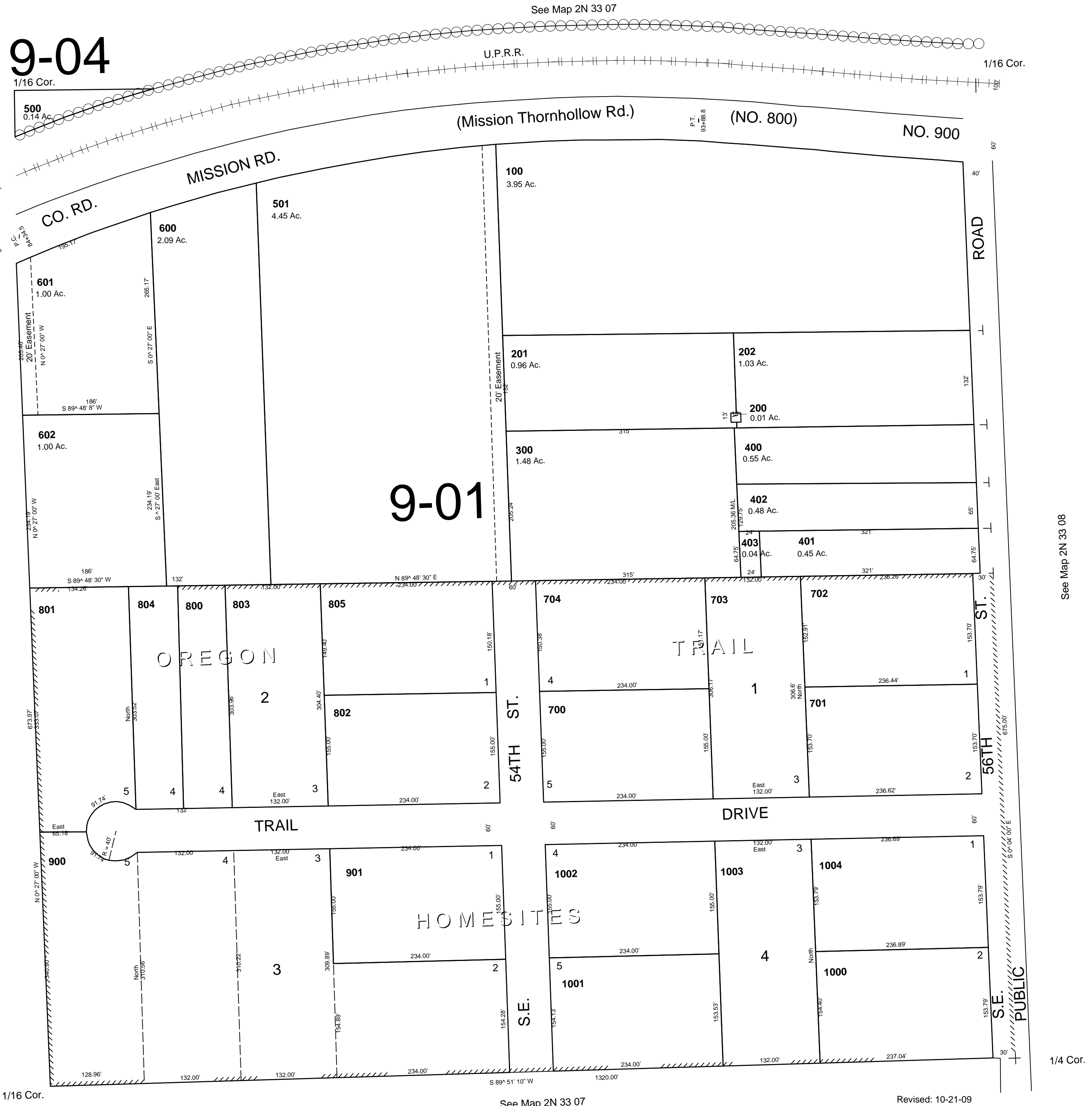


This map was prepared for Assessment & Taxation purposes only and was NOT prepared nor is it suitable for legal, engineering or surveying purposes.

SE1/4 NE1/4 SEC 7 T2N R33E WM
UMATILLA COUNTY
SCALE 1"=100'

2N 33 07AD
AERIAL PHOTO NO 4P-101



2N 33 07AD