

This map was prepared for Assessment & Taxation purposes only and was NOT prepared nor is it suitable for legal, engineering or surveying purposes.

SE1/4 SW1/4 SEC 6 T2N R33E WM
UMATILLA COUNTY
SCALE 1"=100'

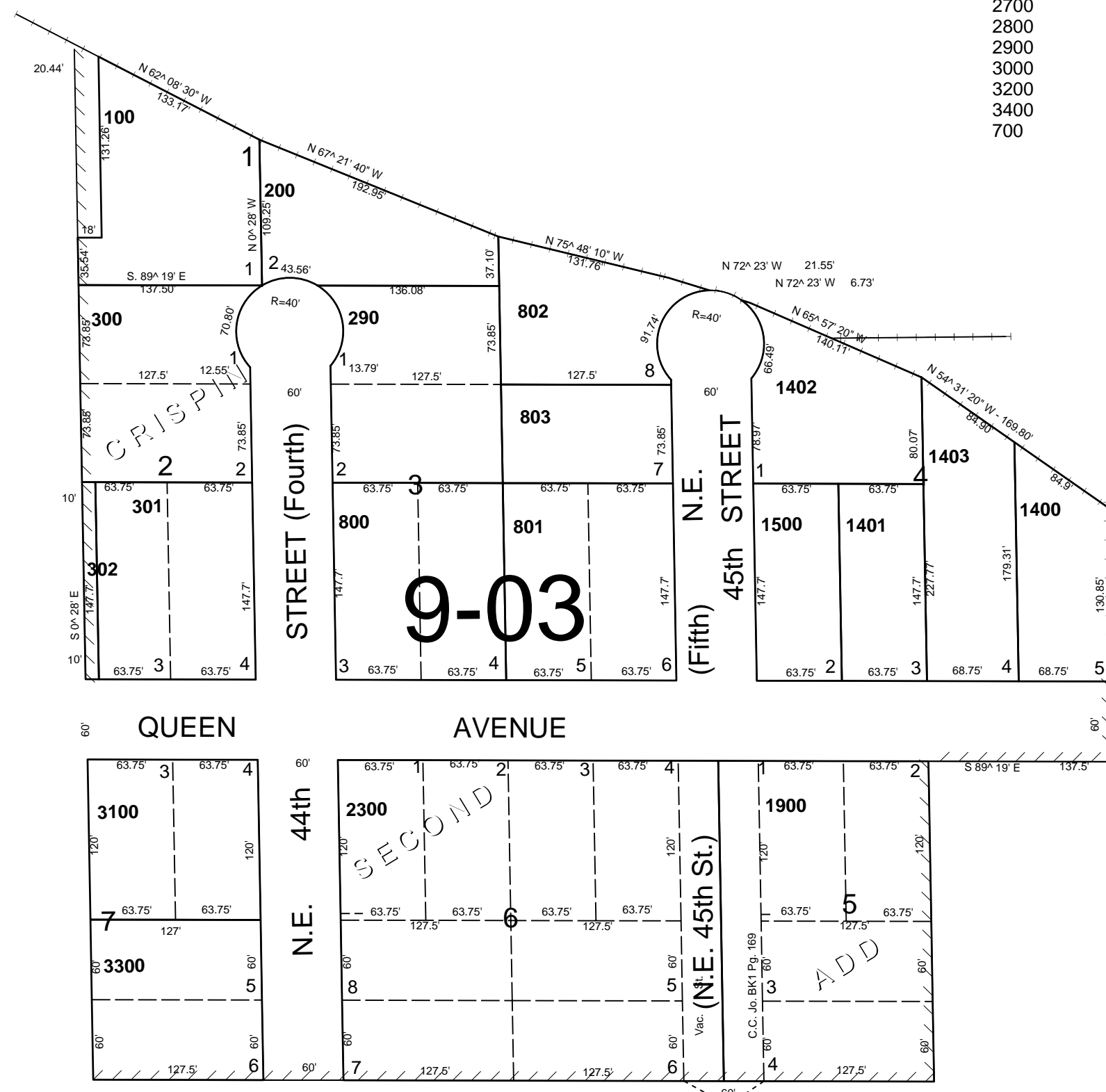
2N 33 06CD
AERIAL PHOTO NO 4P-101

See Map 2N 33 06

- CANCELLED
- 400
- 500
- 600
- 900
- 1000
- 1100
- 1200
- 1300
- 1600
- 1700
- 1800
- 2000
- 2100
- 2200
- 2400
- 2500
- 2600
- 2700
- 2800
- 2900
- 3000
- 3200
- 3400
- 700

See Map 2N 33 06CC

See Map 2N 3306



See Map 2N 33 07

Revised: 04-30-14

2N 33 06CD