

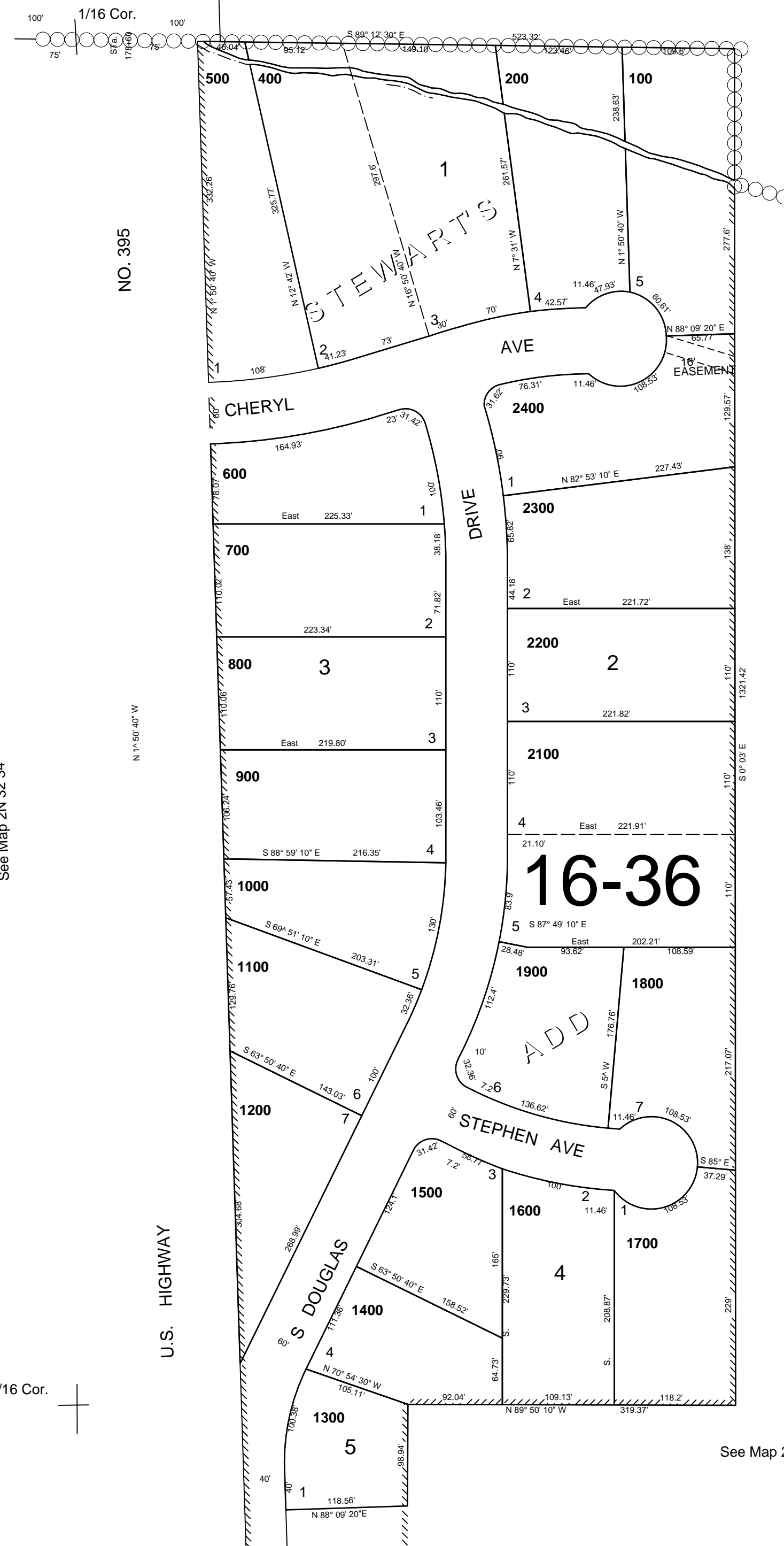
This map was prepared for Assessment & Taxation purposes only and was NOT prepared nor is it suitable legal, engineering or surveying purposes.

# NE1/4 SW1/4 SEC 34 T2N R32E WM UMATILLA COUNTY

2N 32 34CA  
AERIAL PHOTO NO 4P-49 & 50

SCALE 1"=100'

See Map 2N 32 34BD



1/4 Cor.  
+

CANCELLED  
TL 300  
2000  
1300A1

See Map 2N 32 34

See Map 2N 32 34

1/16 Cor.  
+

1/16 Cor.  
+

See Map 2N 32 34CD

Revised: 3/22/12

2N 32 34CA