

This map was prepared for assessment purposes

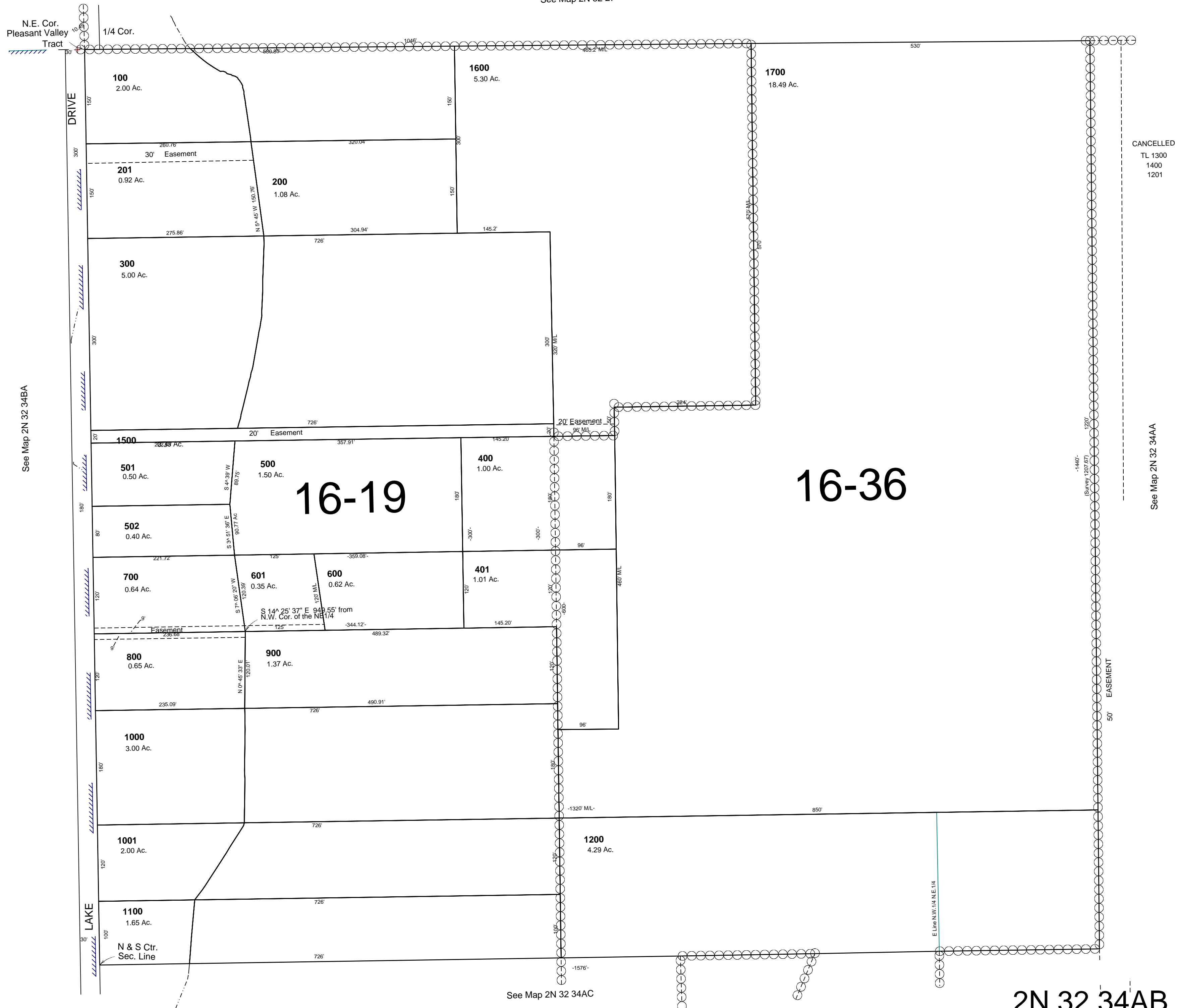
NW1/4 NE1/4 SEC 34 T2N R32E WM UMATILLA COUNTY

SCALE 1"=100'

9/13/06

2N 32 34AB
AERIAL PHOTO NO. 4P-49 & 50

See Map 2N 32 27



See Map 2N 32 34BA

See Map 2N 32 34AA

See Map 2N 32 34AC

2N 32 34AB