

This map was prepared for Assessment & Taxation purposes only and has not been prepared for legal, engineering or surveying purposes.

SE1/4 SW1/4 SEC 27 T2N 32 E WM UMATILLA COUNTY

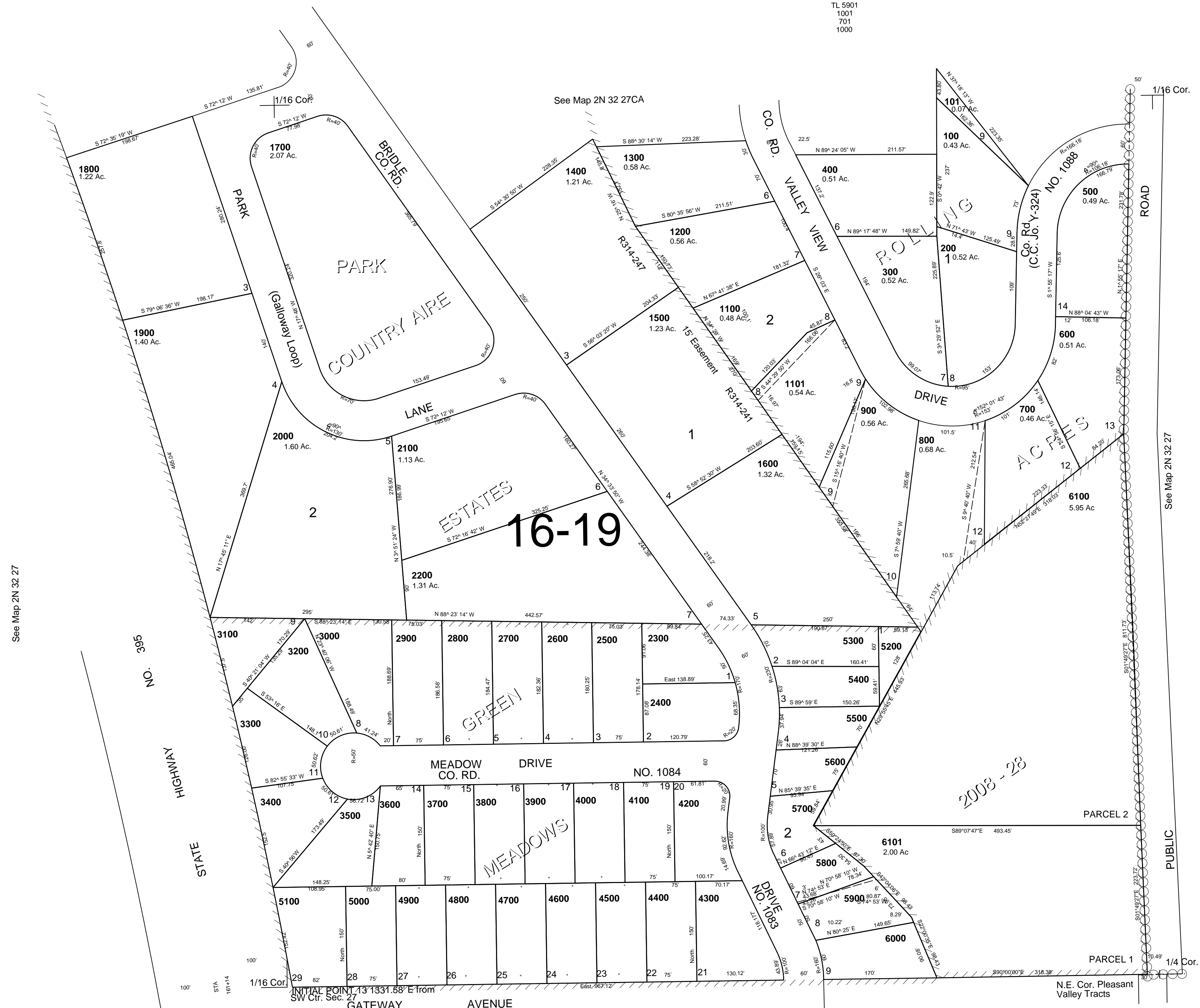
REVISED: 12/05/08

2N 32 27CD
AERIAL PHOTO NO 4P-59

SCALE 1"=100'

CANCELLED

- TL 5801
- TL 5901
- 1001
- 701
- 1000



See Map 2N 32 27

See Map 2N 32 27

See Map 2N 32 34BA

2N 32 27CD