

This map was prepared for assessment purposes

NE1/4 SW1/4 SEC 27 T2N R32E WM  
UMATILLA COUNTY  
SCALE 1"=100'

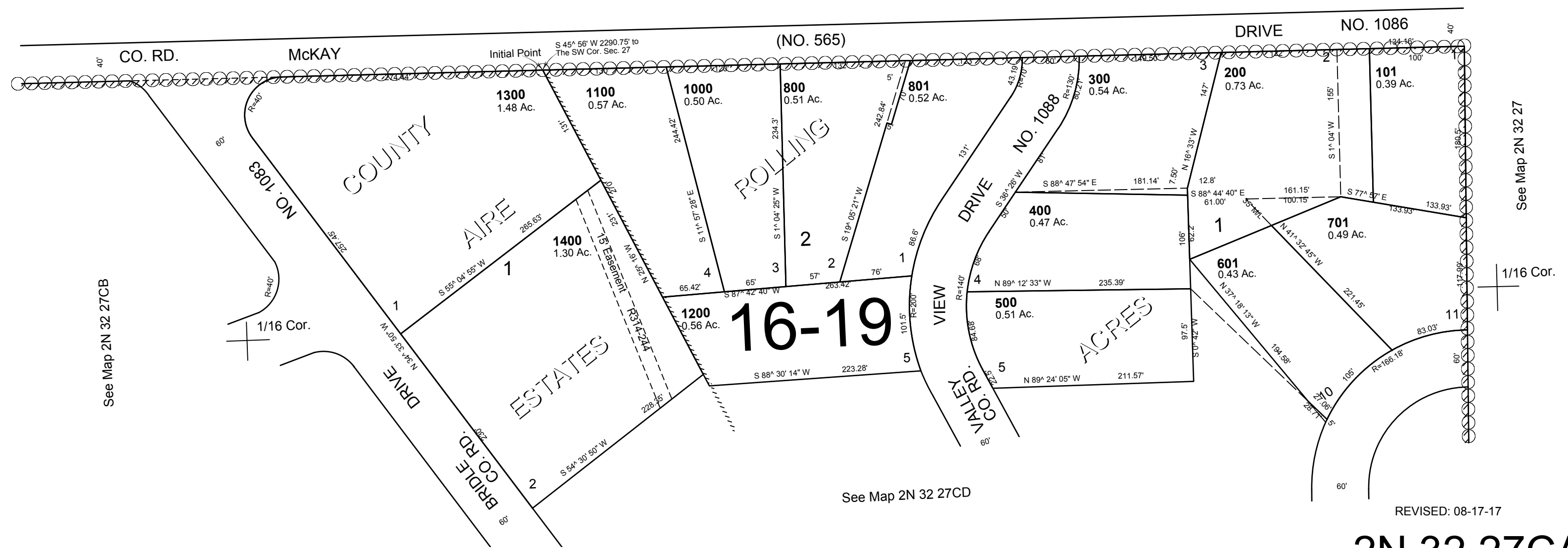
2N 32 27CA  
AERIAL PHOTO NO. 4P-59

Center + Sec.

1/16 Cor.

CANCELLED  
TL 401  
600  
700  
100  
201  
900  
202

See Map 2N 32 27



2N 32 27CA