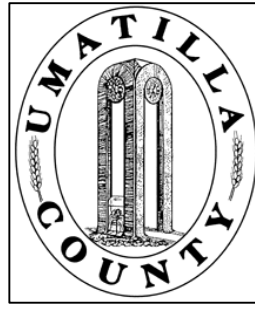


This map was prepared for Assessment & Taxation purposes only and was NOT prepared nor is it suitable for legal, engineering or surveying purposes.



NE1/4 SE1/4 SEC 16 T2N R32E WM  
UMATILLA COUNTY

2N 32 16DA

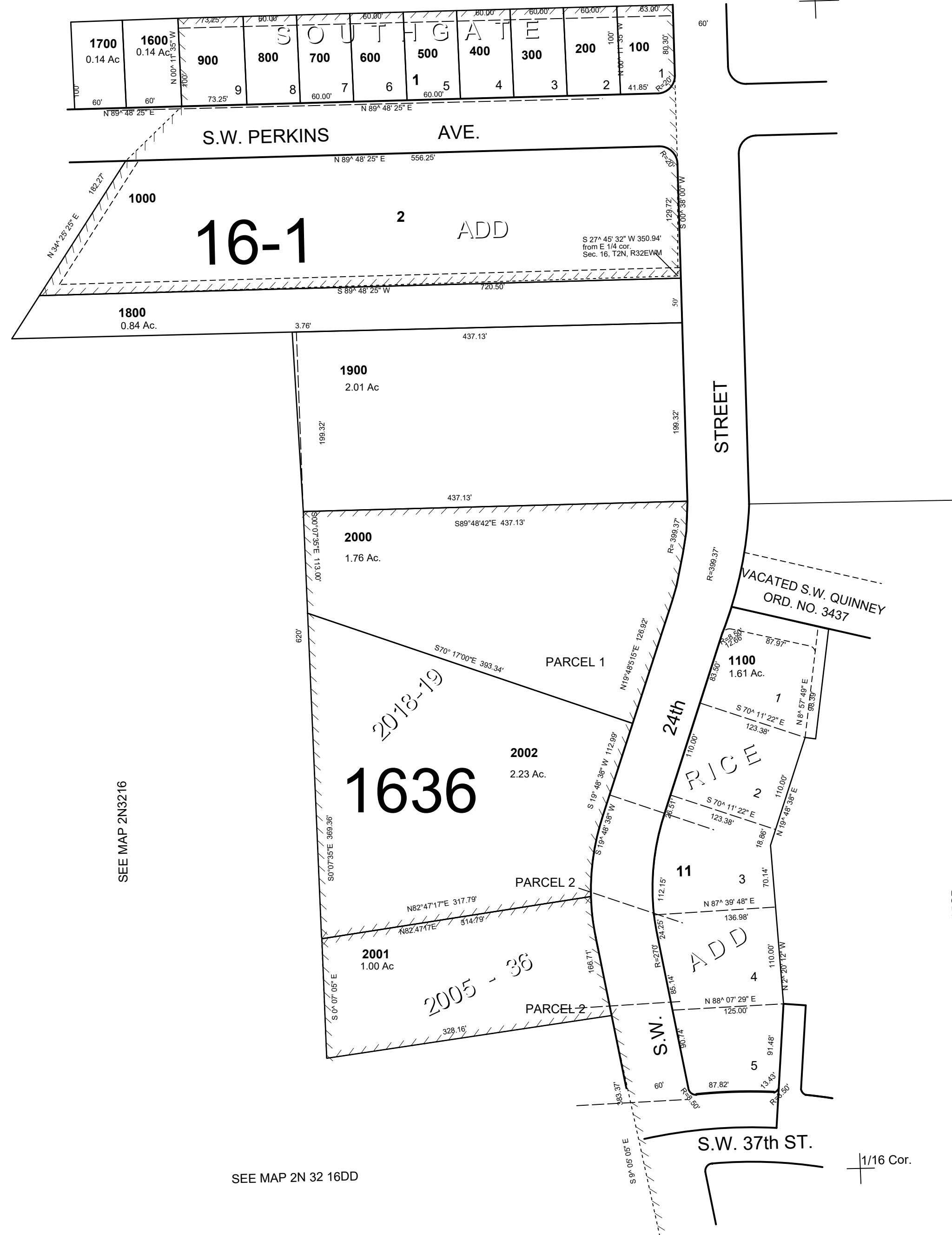
AERIAL PHOTO NO 4P-59

SCALE: 1" = 100'

SEE MAP 2N 32 16AD

1/16 Cor.

1/4 Cor.



1636

REVISED: 12-11-18

2N3216DA