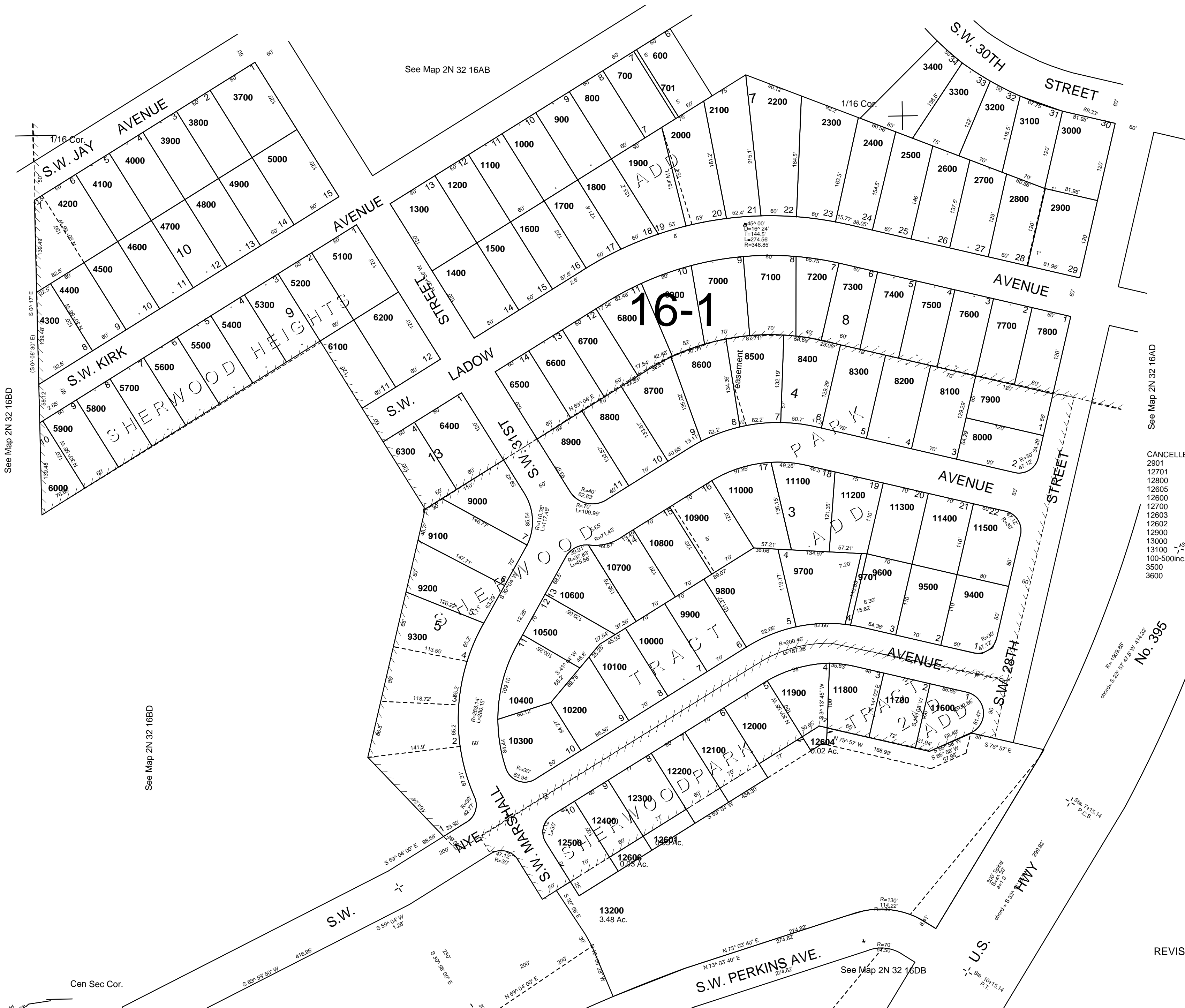


This map was prepared for Assessment & Taxation purposes only and was NOT prepared nor is it suitable for legal, engineering or surveying purposes.

SW 1/4 NE 1/4 SEC 16 T2NR32E WM UMATILLA COUNTY

2N3216AC
AERIAL PHOTO NO 4P-59

SCALE 1"=100'



- CANCELLED
- 2901
 - 12701
 - 12800
 - 12605
 - 12600
 - 12700
 - 12603
 - 12602
 - 12900
 - 13000
 - 13100
 - 100-500inc P.S.
 - 3500
 - 3600

2N3216AC