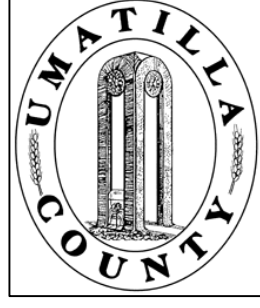


This map was prepared for Assessment purposes only.



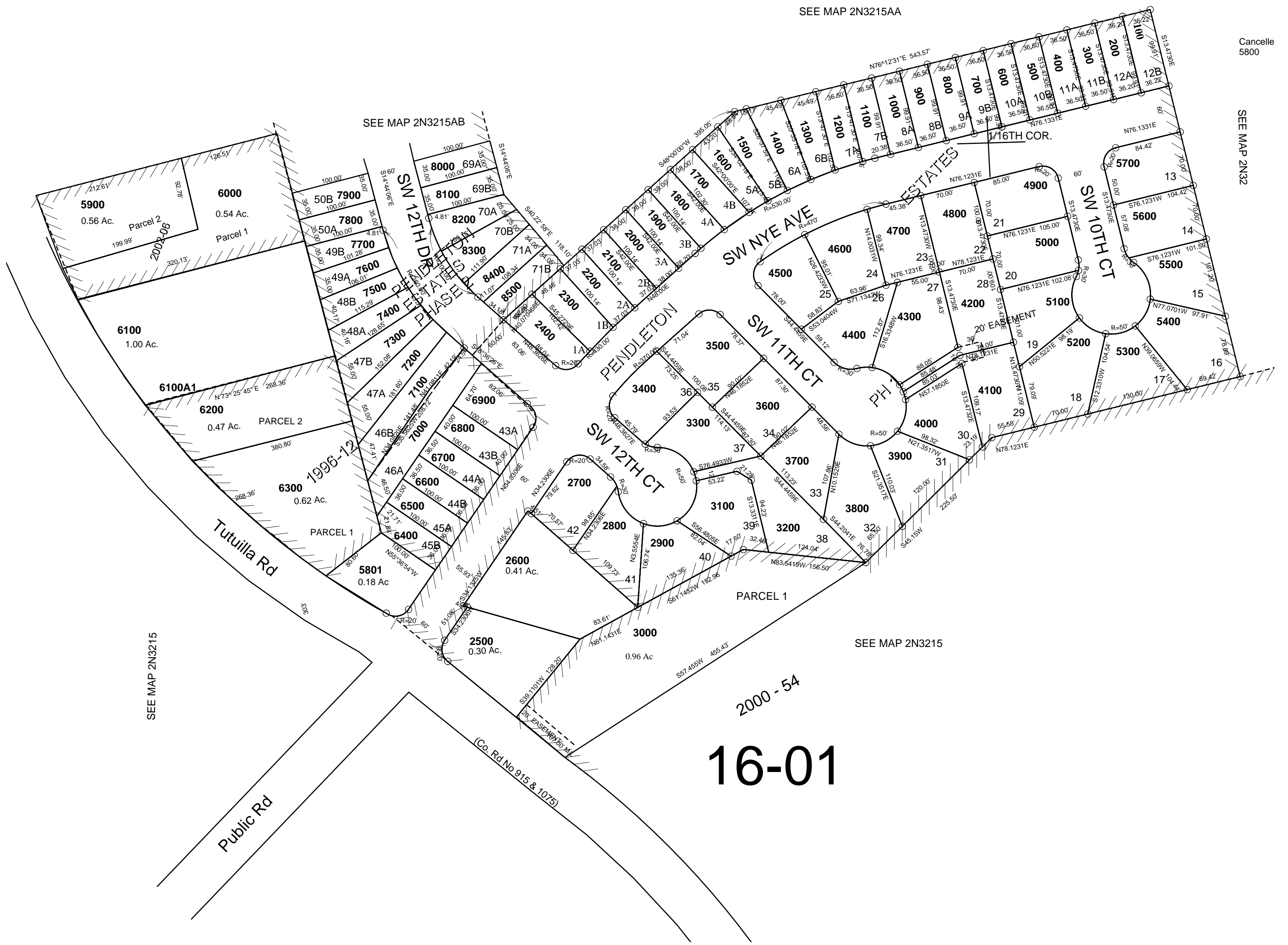
SW1/4 NE 1/4 SEC 15 T2N R32E WM
UMATILLA COUNTY, OR

11/30/06

2N3215AC

SCALE: 1" = 100'

PENDLETON ESTATES
PENDLETON ESTATES PHASE 2



2000 - 54
16-01

2N3215AC