

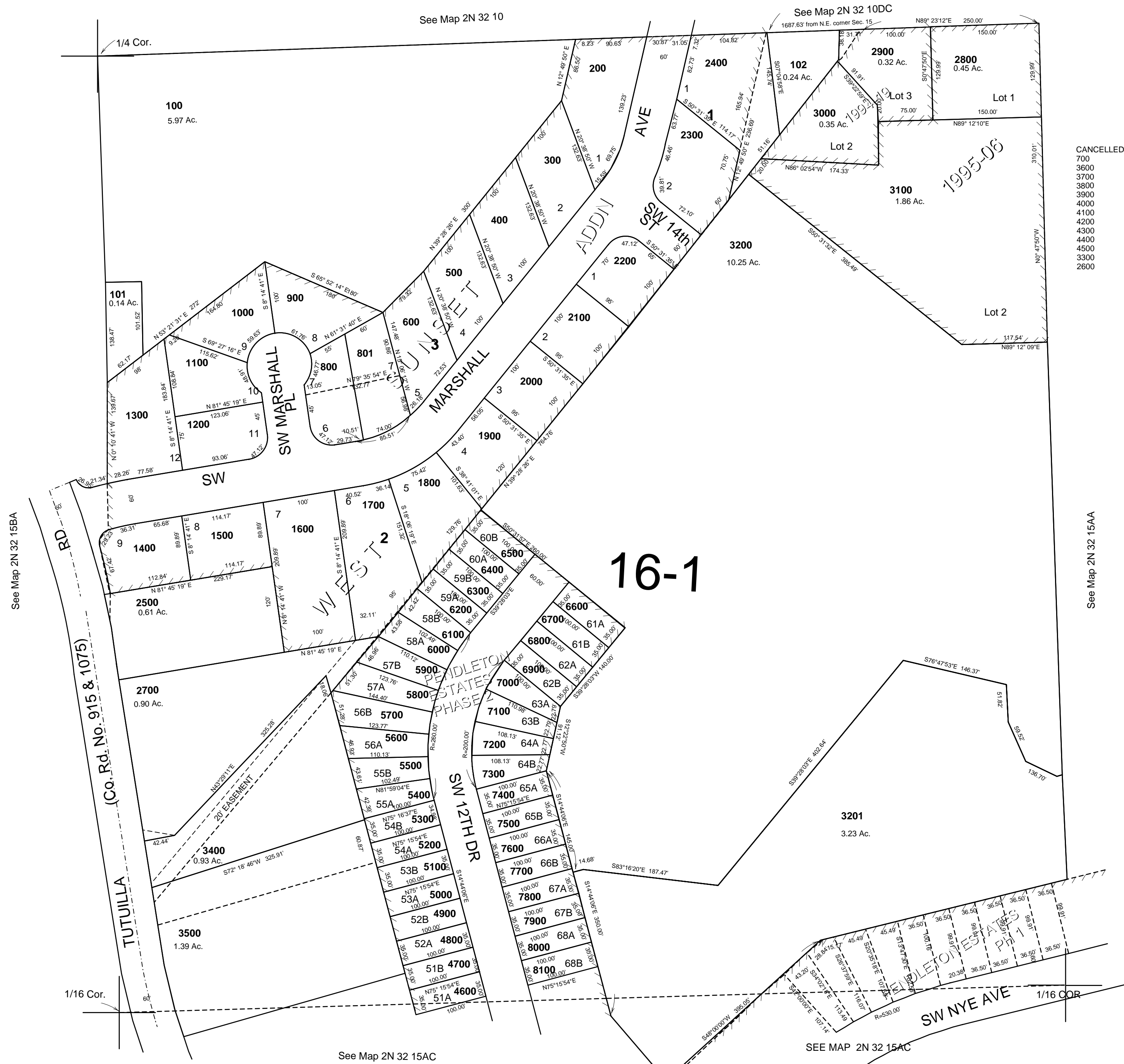
This map was prepared for Assessment & Taxation purposes only and was NOT prepared nor is it suitable for legal, engineering or surveying purposes.

# NW1/4 NE1/4 SEC 15 T2NR32E WM UMATILLA COUNTY

## 2N3215AB

AERIAL PHOTO NO 4P-59

SCALE 1"=100'



CANCELLED  
700  
3600  
3700  
3800  
3900  
4000  
4100  
4200  
4300  
4400  
4500  
3300  
2600

### 16-1

## 2N3215AB

Revised: 12-01-14