

THIS MAP WAS PREPARED FOR
ASSESSMENT PURPOSES ONLY

SE1/4 NE1/4 Sec. 11 T.2N. R.32E.W.M.

UMATILLA COUNTY

1" = 100'

2N 32 11AD

PENDLETON

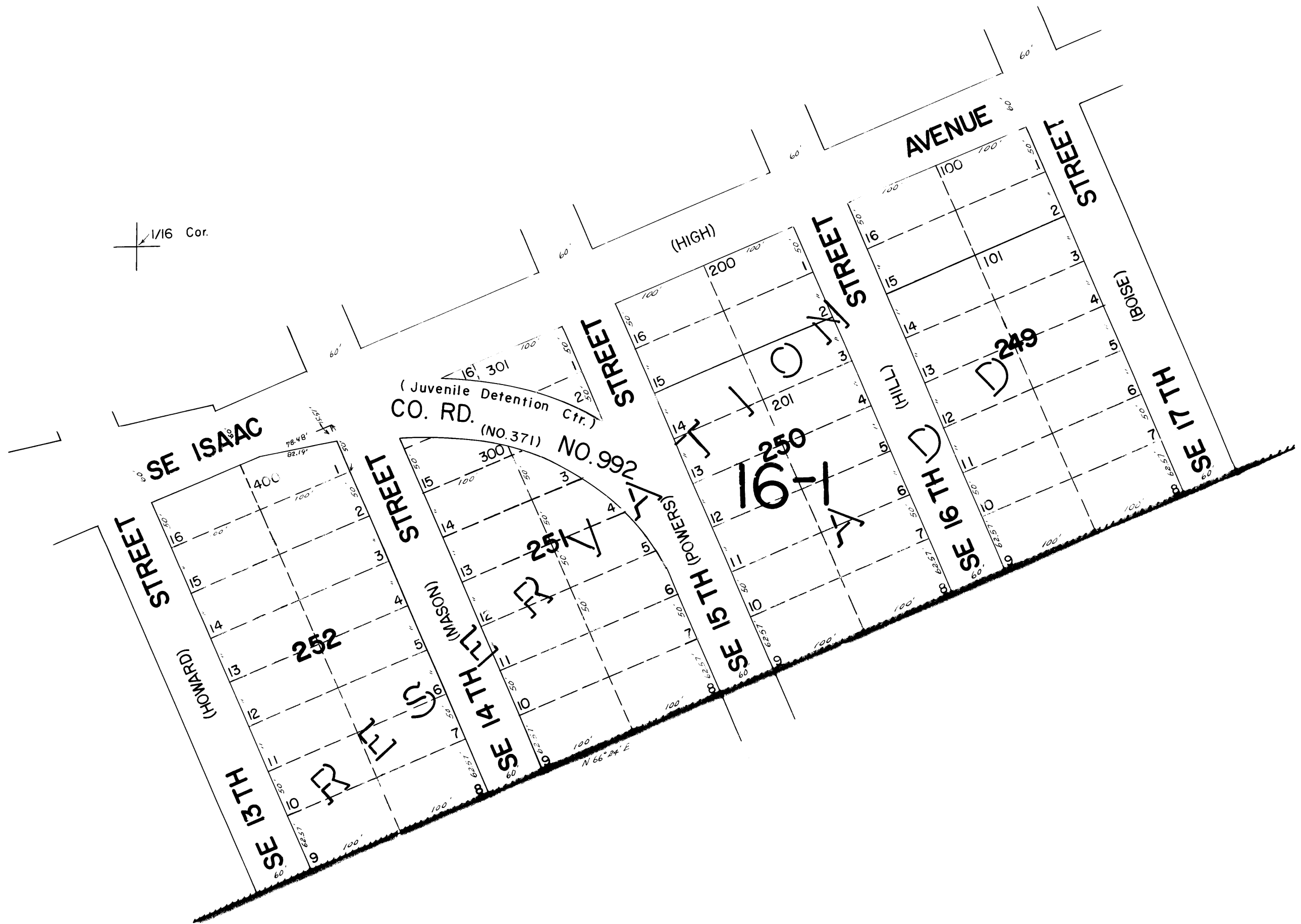
RESERVATION ADD
BLOCKS 249, 250, 251, 252

Aerial Photo No. 4P-103

See Map 2N 32 11AA

CANCELLED
T.L. 401

See Map 2N 32 11AC



1/16 Cor.

See Map 2N 32 12BB

See Map 2N 32 12

2N 32 11AD