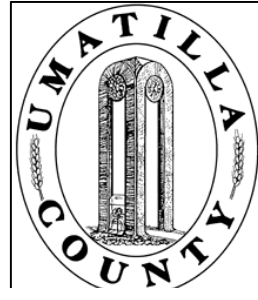


This map was prepared for Assessment & Taxation purposes only and was NOT prepared nor is it suitable for legal, engineering or surveying purposes.

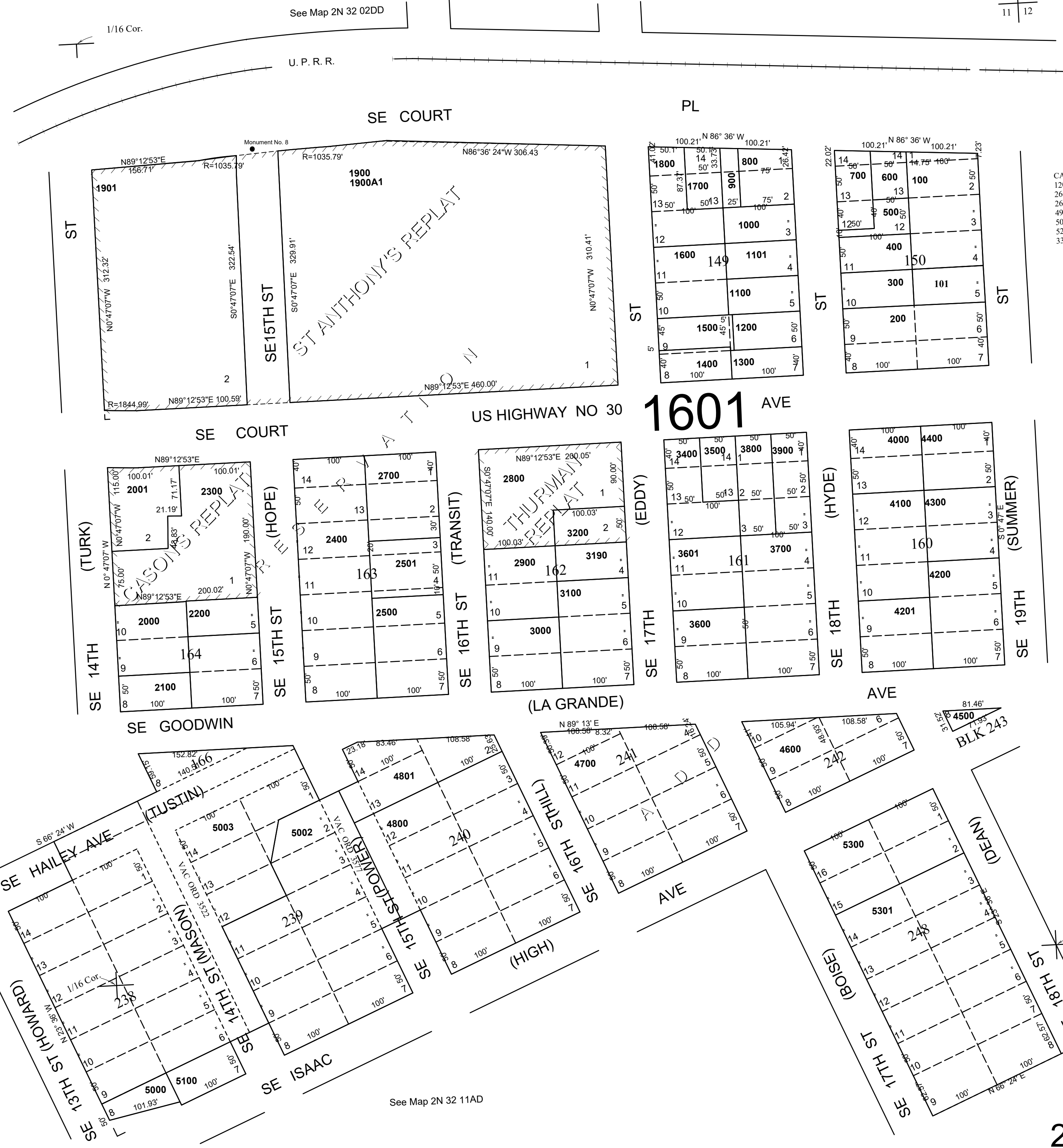


# NE1/4 NE1/4 SEC 11T2N R32E WM UMATILLA COUNTY

## 2N 32 11AA

SCALE: 1" = 100'

2 | 1  
11 | 12



CANCELLED  
1201  
2600  
2601  
4900  
5001  
5200  
5300

See Map 2N 32 11AB

See Map 2N 32 12BB

See Map 2N 32 11AD

Revised: 11-15-18

### 2N3211AA