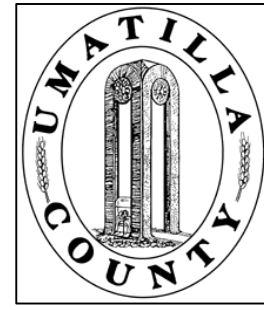


This map was prepared for Assessment & Taxation purposes only and was NOT prepared nor is it suitable for legal, engineering or surveying purposes.

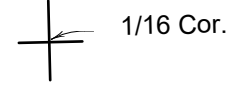


SE 1/4 NE 1/4 SEC 10 T2N R32E WM UMATILLA COUNTY

2N3210AD

AERIAL PHOTO NO NZ-4P-103

SCALE: 1" = 100'



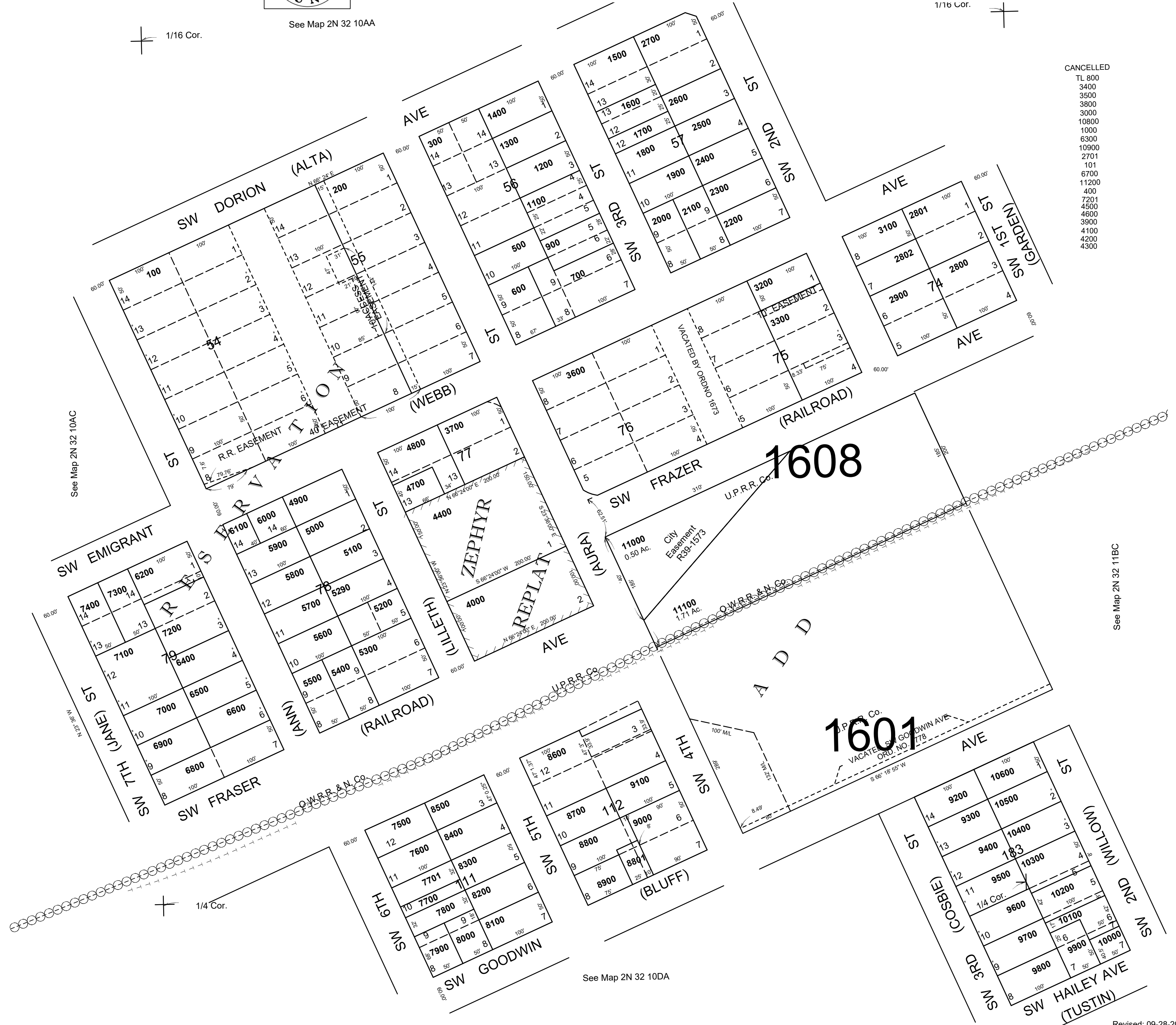
See Map 2N 32 10AA

1/16 Cor.



CANCELLED

- TL 800
- 3400
- 3500
- 3800
- 3000
- 10800
- 1000
- 6300
- 10900
- 2701
- 101
- 6700
- 11200
- 400
- 7201
- 4500
- 4600
- 3900
- 4100
- 4200
- 4300



See Map 2N 32 10AC

See Map 2N 32 11BC

See Map 2N 32 10DA

Revised: 09-28-2021

2N3210AD