

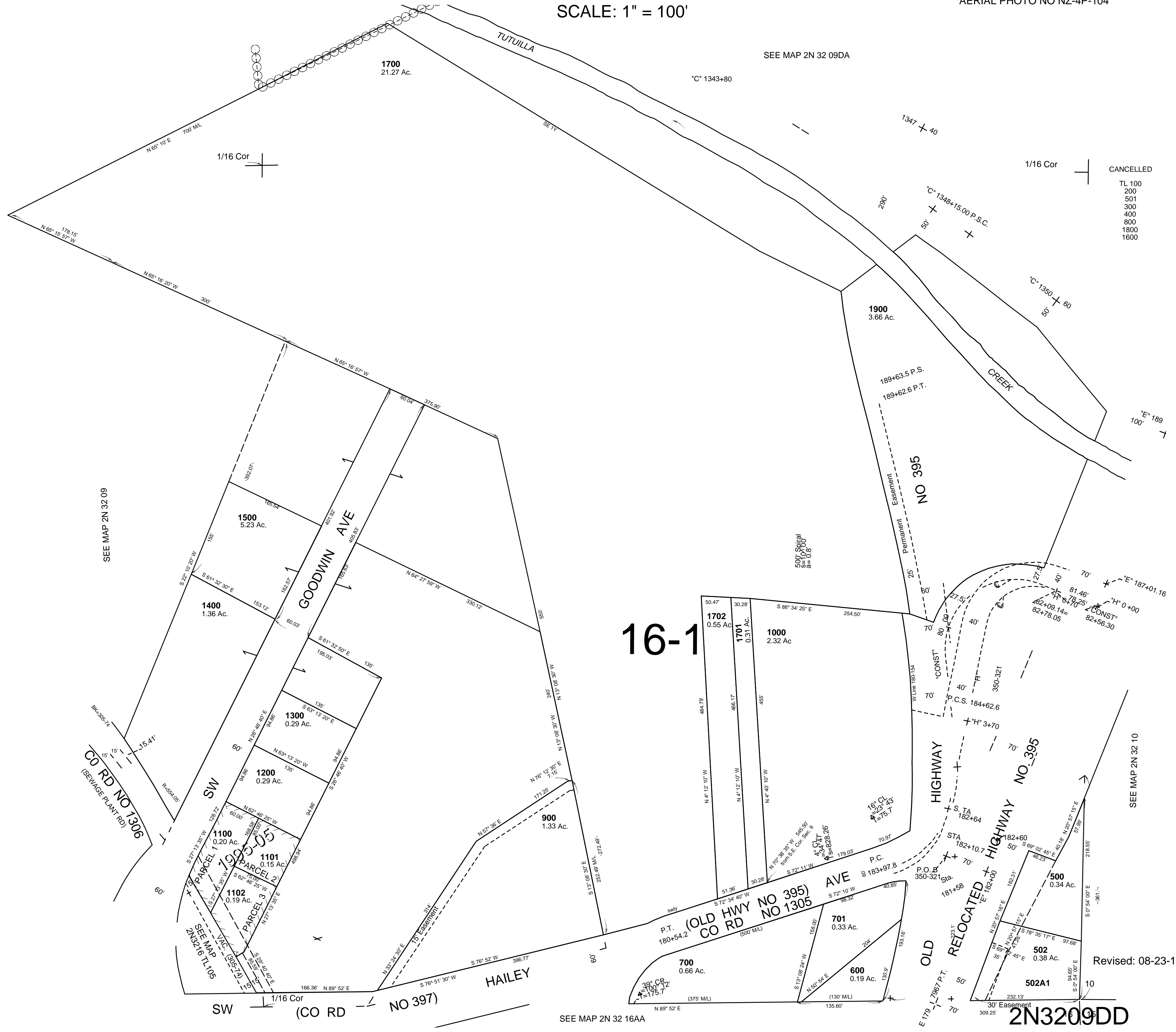
This map was prepared for Assessment & Taxation purposes only and was NOT prepared nor is it suitable for legal, engineering or surveying purposes.

SE1/4 SE1/4 SEC 9 T2N R32E WM UMATILLA COUNTY

2N 32 09DD

SCALE: 1" = 100'

AERIAL PHOTO NO NZ-4P-104



Revised: 08-23-16

2N3209DD