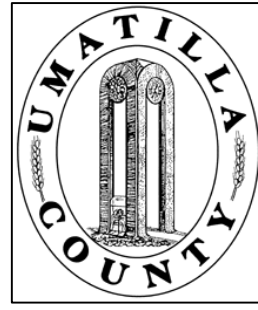


This map was prepared for Assessment & Taxation purposes only and was NOT prepared nor is it suitable for legal, engineering or surveying purposes.

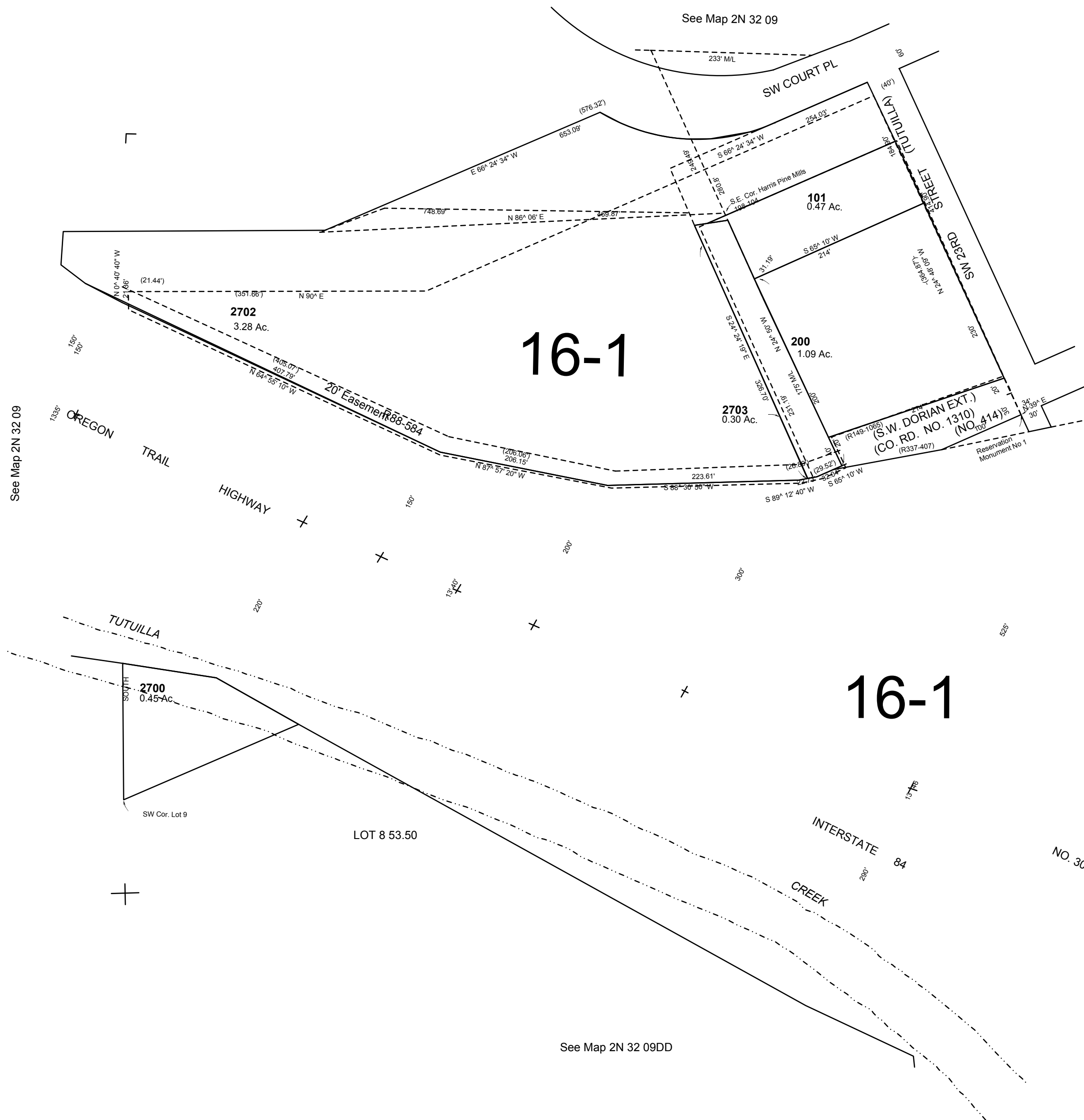


NE1/4 SE1/4 SEC 9 T2N R32E WM UMATILLA COUNTY

SCALE: 1" = 100'

2N3209DA

Aerial Photo No. NZ-4P-104



- CANCELLED
- 2300
- 400
- 500
- 900
- 1000
- 1300
- 1400
- 1500
- 1600
- 1700
- 1800
- 600
- 700
- 800
- 890
- 1100
- 1200
- 1900
- 2000
- 2100
- 2200
- 2400
- 2401
- 2500
- 2600
- 2701
- 301
- 201
- 300
- 100
- 102

See Map 2N 32 09

See Map 2N 32 10CB

See Map 2N 32 09DD

REVISED: 05-10-18

2N3209DA